

Hinge Bases

Bottom Side Mounting T-Shaped

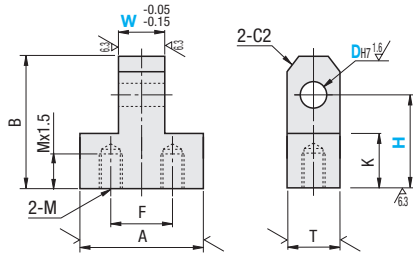
■ **Features:** Bottom Side Mounting makes space-saving in width possible.



RoHS10

W Fixed	W and H Configurable	Material	Surface Treatment
HKKB	HGBB	S45C Equivalent	Black Oxide

25 / (√6.3 / 1.6 / √)



■ **W Fixed**

Part Number		D Tolerance	H 1mm Increment	W	A	F	B	K	T	M (Coarse)	Unit Price
Type	D										
HKKB	2	+0.01	15~20	4	13	7	H+3	10	6	M3	
	3	0	15~25	6	16	8	H+5		9		
	4	+0.012	20~30	8	19	11	H+6		12		12
	5	0	25~35	10	25	16	H+8				
	6	+0.015	30~40		38	26	H+10	14	16	M5	
	10	0	35~45	12	50	36	H+12		19		
	12	+0.018	40~50				H+14		22		M6
	13	0					H+17	25			
	14	+0.018						18	22	M8	
	15	0						30	30		
	16	+0.021									
	20	0									
	25										

⚠ For detailed dimensions of Hinge Pin, see P.908.

■ **W and H Configurable**

Part Number		D Tolerance	W 1mm Increment	H 5mm Increment	A	F	B	K	T	M (Coarse)	Unit Price
Type	D										
HGBB	2	+0.01	3~5	15~20	13	7	H+3	10	6	M3	
	3	0	3~6	15~25	16	8	H+5		9		
	4	+0.012	4~8	20~30	19	11	H+6		12		12
	5	0	5~10	25	16	H+8					
	6	+0.015	6~12	38	26	H+10	14	16	M5		
	8	0	8~16	50	38	H+12		19			
	10	+0.018	10~18					36		H+17	15
	12	0	12~18								
	13	+0.018	13~24	35~45				18	22	M8	
	14	0	14~24	40~50	65	47		30	30		
	15	+0.021	15~24								
	16	0	16~24								
	20		20~30								
	25		25~35								

⚠ For detailed dimensions of Hinge Pin, see P.908.



Ordering Example

Part Number	-	W	-	H
HKKB8	-	H27	-	H27
HGBB8	-	W8	-	H25



Example

Combination of these app. examples can be selected on our website. For details of selections see P.87

*Enter the search keyword in the search box on e-Catalog. The search result will be shown in "Modular Assembler" area.

e-Catalog Search Keyword
#MA515 Search

