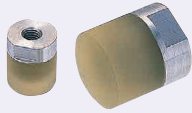


# Urethane Rubber Pushers

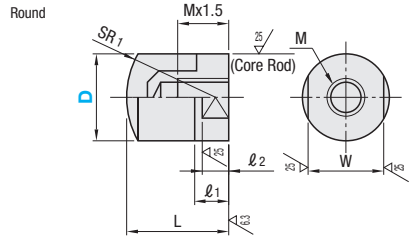
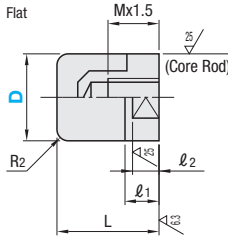
■ **Features:** Pushers with shore A30 ~ 90 are available.

## ■ Tapped Type



Type		Pushers		Core Rod
Flat	Round	Hardness	Material	Material
URLH	URSH	Shore A90	Ether Polyurethane	SUS304
URLM	URSM	Shore A70	Ester Polyurethane	
URLL	URSL	Shore A50		
PSHLH	RSHLH	Shore A30		

Ⓢ For urethane rubber properties, see P.389.



6.3 / ( 25 / 6.3 )

Part Number		L	MxPitch	SR1	R2	l1	l2	W	Unit Price		
Type	D								URLH URSH	URLM, URLL URSM, URSL	PSHLH RSHLH
Flat URLH URLM URLL PSHLH	Round URSH URSM URSL RSHLH	8	12	M3x0.5	8	1	5	4	7		
		10	15	M4x0.7	10				8		
		12	16	M5x0.8	12	2	6	5	10		
		16	20	M6x1.0	16				14		
		20	25	M8x1.25	20	3	8	6	17		
		25	30	M10x1.5	25				22		
		25A	30	M10x1.25	30	10	8	8	27		
		30	35	M12x1.75	30				30		
		32	37	M14x1.5	32	12	10	10	32		
		36	45	M18x1.5	36				36		
		40	50	M20x1.5	40	3.5	14	12	36		
		40A		M22x1.5							

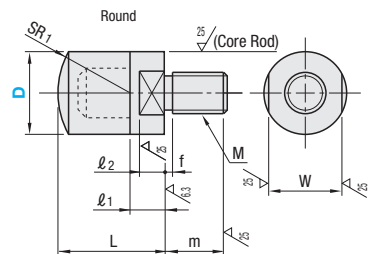
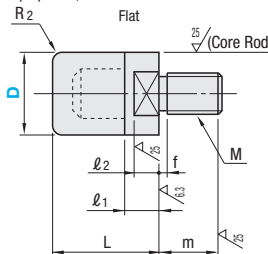
Ⓢ Pitches of D Dimension 25A are fine threaded. Ⓢ The thread of D dimension 40A is M22x1.5. Ⓢ Urethane rubber is thermally bonded to the core rod.  
 Ⓢ Urethane may discolor over time but there is no effect on properties.

## ■ Threaded Type



Type		Pushers		Core Rod
Flat	Round	Hardness	Material	Material
USLH	USSH	Shore A90	Ether Polyurethane	SUS304
USLM	USSM	Shore A70	Ester Polyurethane	
USLL	USLL	Shore A50		
PSHMLH	RSHMLH	Shore A30		

Ⓢ For urethane rubber properties, see P.389.



6.3 / ( 25 / 6.3 )

Part Number		L	MxPitch (Coarse)	SR1	R2	m	l1	l2	f	W	Unit Price		
Type	D										USLH USSH	USLM, USLL USSM, USLL	PSHMLH RSHMLH
Flat USLH USLM USLL PSHMLH	Round USSH USSM USLL RSHMLH	6	10	M3x0.5	6	1	4.5	5	4	1	5		
		8	12	M4x0.7	8						6		
		10	15	M5x0.8	10	2	12	6	5	1.5	10		
		12	16	M6x1.0	12							14	
		16	20	M8x1.25	16	3	18	10	8	3	22		
		20	25	M10x1.5	20							17	
		25	30	M16x2.0	25	22	22	10	8	3.5	32		
		32	37	M20x2.5	32							30	
		36	45	M22x2.5	36	3.5	24	12	10				

Ⓢ Urethane may discolor over time but there is no effect on properties. Ⓢ Urethane rubber is thermally bonded to the core rod.



Ordering Example

Part Number

URLM10  
USLM12