

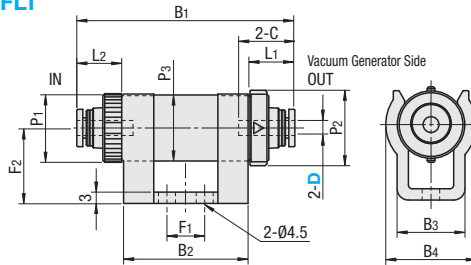
Vacuum Filters

Vacuum Filters / Elements for Replacement

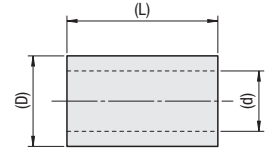


RoHS10

VFLT



VFLTE (Element for Replacement)



Material Main Body : Polycarbonate
Element : Polyvinyl Formal

| Part Number Type | D | B ₁ | B ₂ | B ₃ | B ₄ | L ₁ | L ₂ | P ₁ | P ₂ | P ₃ | C | F ₁ | F ₂ | Filtration Area (cm ²) | Mass (g) | Unit Price 1-9 pc(s). | Volume Discount Rate 10~20 |
|------------------|---|----------------|----------------|----------------|----------------|----------------|----------------|----------------|----------------|----------------|------|----------------|----------------|------------------------------------|----------|-----------------------|----------------------------|
| VFLT | 4 | 58 | 33 | 18 | 24 | 11.9 | 11.9 | 18.2 | 20 | 17.5 | 14.9 | 10 | 20 | 7.5 | 18 | | |
| | 6 | 60 | | | | 13 | 13 | | | | 16 | | | | 19 | | |

| Part Number | (D) | (d) | (L) | Unit Price 1-9 pc(s). | Volume Discount Rate 10~20 |
|-------------|-----|-----|-----|-----------------------|----------------------------|
| VFLTE | 12 | 8 | 20 | | |

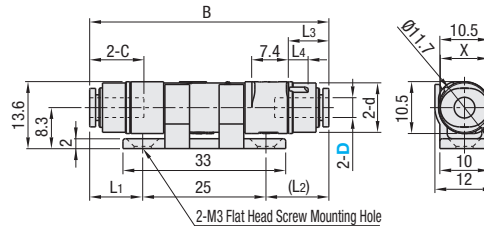
Applicable to both VFLT4 and VFLT6.

Vacuum Filters / Elements for Replacement - Small

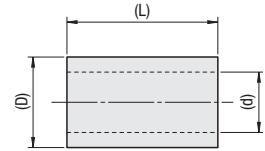


RoHS10

VFS



VFSE (Element for Replacement)



Material Main Body : Polycarbonate
Element : Polyvinyl Formal

| Part Number Type | D | B | C | L ₁ | (L ₂) | L ₃ | L ₄ | d | X | Element Length | Filtration Area (cm ²) | Mass (g) | Unit Price 1-9 pc(s). | Volume Discount Rate 10~20 |
|------------------|---|------|------|----------------|-------------------|----------------|----------------|------|------|----------------|------------------------------------|----------|-----------------------|----------------------------|
| VFS | 4 | 48.5 | 11 | 10.8 | 12.7 | 8.2 | 4 | 10 | 9.8 | 15 | 2.8 | 5.1 | | |
| | 6 | 53.4 | 11.6 | 13.2 | 15.2 | 10.6 | 4.5 | 10.5 | 11.8 | | | 6 | | |

| Part Number | (D) | (d) | (L) | Unit Price 1-9 pc(s). | Volume Discount Rate 10~20 |
|-------------|-----|-----|-----|-----------------------|----------------------------|
| VFSE | 6 | 4 | 15 | | |



Ordering Example

Part Number

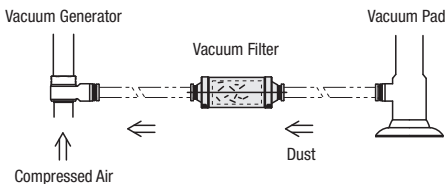
VFS4



Example

Plumbing Example

Plumbing between Vacuum Generator and Vacuum Pad removes dusts entering from pad and protects Generator from failures.



Specifications

| | |
|-----------------------------|-----------|
| Applicable Fluid | Air |
| Operating Temperature Range | 0~60°C |
| Operating Pressure Range | -100~0kPa |
| Filtration Accuracy | 5µm |



Element Replacement

How to Remove

- Turn plastic body B 45° counterclockwise*.
- Pull out plastic body B.

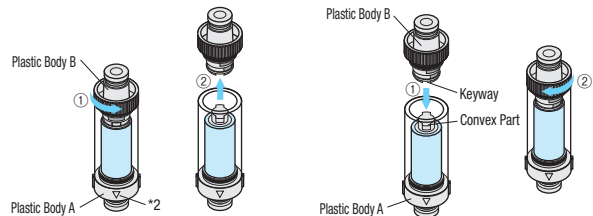
* Do not turn the plastic body B beyond 45°. It may damage the plastic body.

How to Lock

- Press-fit plastic body B completely to plastic body A. Be sure that the lug of plastic body A aligns with the key slot in plastic body B.
- Turn plastic body B 45° clockwise *1 to lock.

*1. Do not turn the plastic body B beyond 45°. It may damage the plastic body.

*2. When locking, be sure that the lug of plastic body A comes to the center of the hole in plastic body B.



*2. Be sure that the vacuum generator is installed in the same direction as pointed by the △ mark.

If installed reversely, the element inside will become dirty, making it impossible to know the proper time for maintenance.