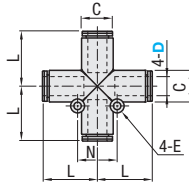


One-Touch Couplings

Cross Unions



USCRS



Material: PBT (Polybutylene Terephthalate)

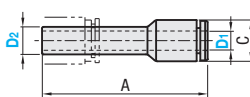
Part Number		D	L	C	E	N	Mass (g)	Unit Price	Volume Discount Rate
Type	D							1 - 9 pc(s).	10-50
USCRS	8	23.6	13.6	3.2	17	14.5			
	10	25	16.3	4.2	20	20.5			
	12	32.2	19.7	4.2	24	38			

For orders larger than indicated quantity, please check with WOS.

Reducers



USRDS



Material: PBT (Polybutylene Terephthalate)

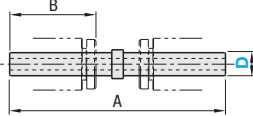
Part Number		D ₁	D ₂	A	C	Effective Sectional Area (mm ²)	Mass (g)	Unit Price	Volume Discount Rate
Type	D ₁	D ₂	A	C	Effective Sectional Area (mm ²)	Mass (g)	Unit Price	1 - 9 pc(s).	10-50
USRDS	4	6	36.1	9	3.2	2			
		8	36.9	9					
	6	8	39.5	11.2	11.0	3			
		10	40.3	11.2					
	8	10	45.6	13.6	25.2	4.5			
		12	46.6	13.6					
10	12	46.6	16.3	38.7	6.5				

For orders larger than indicated quantity, please check with WOS.

Nipples



MSPJ



Material: PBT (Polybutylene Terephthalate)

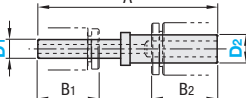
Part Number		D	A	B	Effective Sectional Area (mm ²)	Mass (g)	Unit Price	Volume Discount Rate
Type	D	A	B	Effective Sectional Area (mm ²)	Mass (g)	Unit Price	1 - 9 pc(s).	10-50
MSPJ	4	37.5	16	3.2	2			
	6	39.5	17	12.6	3			
	8	43.2	18.5	19.6	4			
	10	47	21	31.2	6			
	12	52.8	22.5	50.2	8			

For orders larger than indicated quantity, please check with WOS.

Unequal DIA. Connection Plugs



BSLDS



Material: PBT (Polybutylene Terephthalate)

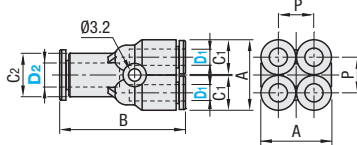
Part Number		D ₁	D ₂	A	B ₁	B ₂	Effective Sectional Area (mm ²)	Mass (g)	Unit Price	Volume Discount Rate
Type	D ₁	D ₂	A	B ₁	B ₂	Effective Sectional Area (mm ²)	Mass (g)	Unit Price	1 - 9 pc(s).	10-50
BSLDS	4	6	38.3	16	17	3.2	3			
	6	8	41.2	17	18.5	12.6	3			
	8	10	45	18.5	21	18.8	5			
	10	12	49.8	21	22.5	31.2	8			

For orders larger than indicated quantity, please check with WOS.

Double Y-Shaped



DSNYL



Material: PBT (Polybutylene Terephthalate)

Part Number		D ₂	A	B	C ₁	C ₂	P	Unit Price	Volume Discount Rate
Type	D ₂	A	B	C ₁	C ₂	P	Unit Price	1 - 9 pc(s).	10-30
DSNYL	4	6	18.2	32.5	9	11.2	9.2		
	6	8	22.6	36.6	11.2	13.6	11.4		

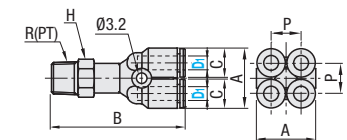
For orders larger than indicated quantity, please check with WOS.

R (PT) Double Y-Shaped



DSLYL

Thread: C3604 (Brass)
: Electroless Nickel Plating



Material: PBT (Polybutylene Terephthalate)

Part Number		Nominal Dia.	A	B	C	Wrench Flats H	P	Thread Size R (PT)	Unit Price	Volume Discount Rate	
Type	D ₁	Nominal Dia.	A	B	C	Wrench Flats H	P	Thread Size R (PT)	Unit Price	1 - 9 pc(s).	10-30
DSLYL	4	1	18.2	41.5	9	11	9.2	R1/8			
		2	18.2	44.5	9	14	9.2	R1/4			
	6	1	22.6	45	11.2	13	11.4	R1/8			

For orders larger than indicated quantity, please check with WOS.



Ordering Example
Part Number
USCRS

Specifications

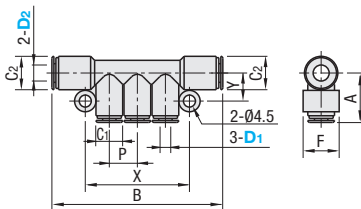
Applicable Fluid	Air
Operating Temperature Range*	0-60°C
Max. Operating Pressure	0.9MPa
Operating Vacuum Level	-100kPa

* No Freezing

3x1



DUNL



Material: PBT (Polybutylene Terephthalate)

Part Number		D ₁	D ₂	A	B	C ₁	C ₂	P	F	X	Y	Unit Price	Volume Discount Rate
Type	D ₁	D ₂	A	B	C ₁	C ₂	P	F	X	Y	Unit Price	1 - 9 pc(s).	10-30
DUNL	4	6	18.5	64	10	12.5	10.5	13.5	39	10.5			
		8	19.5	66	10	14.5	10.5	15.5	39	11.5			
	6	8	21	73	12.5	14.5	13	15.5	46.5	11.5			
		10	22	78.5	12.5	17.5	13	18.5	46.5	13			
	8	10	23.5	84.5	14.5	17.5	15	18.5	52.5	13			

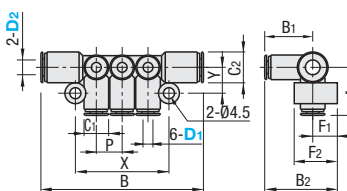
For orders larger than indicated quantity, please check with WOS.

RoHS10

3x2



DUNLW



Material: PBT (Polybutylene Terephthalate)

Part Number		D ₁	D ₂	A	B	B ₁	B ₂	C ₁	C ₂	P	F ₁	F ₂	X	Y	Unit Price	Volume Discount Rate
Type	D ₁	D ₂	A	B	B ₁	B ₂	C ₁	C ₂	P	F ₁	F ₂	X	Y	Unit Price	1 - 9 pc(s).	10-30
DUNLW	4	8	19.5	66	19.5	29.5	10	14.5	10.5	10	17.5	38	10.5			
	6	10	22	78.5	22	32	12.5	17.5	13	10	19.5	45	12			
	8	12	24.5	87	24.5	36	14.5	20	15	11.5	22	51	13			

For orders larger than indicated quantity, please check with WOS.



Ordering Example
Part Number - D₂
DUNLW4 - 8

Specifications

Applicable Fluid	Air
Operating Temperature Range*	-15-60°C
Max. Operating Pressure	1MPa
Operating Vacuum Level	-100kPa

* No Freezing

RoHS10