

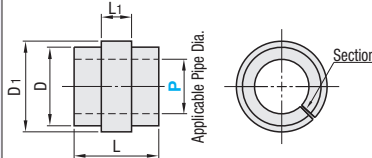
# Accessories for Plumbing Clamps

## Rubber Bushings



RoHS 10

**MCBR** (For Inch Pipes)  
**MCBM** (For Metric Pipes)



Inch Pipe O.D.	
Nominal	mm
1/8	10.5
1/4	13.8
3/8	17.3
1/2	21.7
3/4	27.2
1	34.0
1 1/4	42.7
1 1/2	48.6
2	60.5

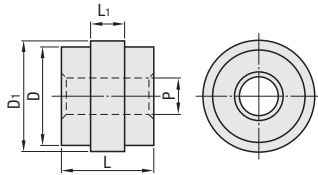
Material: Neoprene Rubber

## Mounting Adapters



RoHS 10

**MCMA**

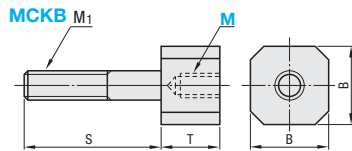


Material: Aluminum Alloy Diecast (ADC12)

## Coupling Screws



RoHS 10



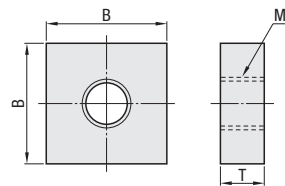
\* Details of Applicable Clamps Refer to App. Example P1289  
Material M=8 S45C M=10 SCM435  
Surface Treatment: Trivalent Chromate

## Weld-On Adapters



RoHS 10

**MCWA**



Material: SS400

Part Number Type	P=Applicable Pipe Dia. Selection (For inch pipes, select numbers above)						L	L1	D	D1	Applicable Body No.								
	No.	1	2	3	4	6													
MCBR (For Inch Pipes)	38	1 (1/8)	2 (1/4)	3 (3/8)			36	13.2	22.8	28.8	38								
	50	1 (1/8)	2 (1/4)	3 (3/8)	4 (1/2)	6 (3/4)	36	13.2	33.2	40.8	50								
	75			3 (3/8)	4 (1/2)	6 (3/4)	8 (1)	10 (1, 1/4)	48	19.3	56	64.4	75						
	100					6 (3/4)	8 (1)	10 (1, 1/4)	12 (1, 1/2)	16 (2)	52	17.8	76	88	100				
MCBM (For Metric Pipes)	38	6	8	10	12	15	36	13.2	22.8	28.8	38								
	50	10	12	15	16	18	20	22	25	30	36	13.2	33.2	40.8	50				
	75	10	12	15	16	18	20	22	25	28	30	32	34	35	38	40	42	75	
	100												28	30	32	35	38	40	42

No.	P	MCBR (For Inch Pipes)		No.	P	MCBM (For Metric Pipes)		No.	P	MCBM (For Metric Pipes)	
		Unit Price	Volume Discount Rate			Unit Price	Volume Discount Rate			Unit Price	Volume Discount Rate
		1 - 9 pc(s).	10 - 50			1 - 9 pc(s).	10 - 50			1 - 9 pc(s).	10 - 50
38	1			38	6			75	20		
	2				8				22		
	3				10				25		
50	1			50	12			100	28		
	2				15				30		
	3				16				32		
	4				18				34		
75	3			75	10			100	35		
	4				12				38		
	6				15				40		
	8				16				42		
100	8			100	18			100	28		
	10				20				30		
	12				22				32		
	16				25				35		
					30				38		
					10				40		
					12				42		
					16				50		

Part Number Type	No.	P	L	L1	D	D1	Applicable Body No.	Unit Price	Volume Discount Rate
								1 - 9 pc(s).	10 - 50
MCMA	38	8.5	32	13.3	21.2	28.8	38		
	50	8.5	32	13.3	31.2	40.8	50		
	75	13	43	19.5	54	64.4	75		

Part Number Type	No.	M (Coarse)	S	T	B	M1 (Coarse)	Applicable Body No.	Unit Price	Volume Discount Rate
								1 - 9 pc(s).	10 - 50
MCKB	38	8	50	23	17	M8	38		
	50	8	65	23	17	M8	50		
	75	8	90	23	17	M10	75		
		10	90	33	17	M10	75		
	100	8	120	23	17	M10	100		
		10	120	33	17	M10	100		

Part Number Type	No.	M (Coarse)	T	B	Applicable Body No.	Unit Price	Volume Discount Rate
						1 - 9 pc(s).	10 - 50
MCWA	38	M8	16	25	38		
	50	M8	16	25	50		
	75	M10	19	38	75		
	100	M10	25	44	100		



Ordering Example

Part Number - P or M  
**MCBM38** - 10  
**MCMA50**  
**MCKB100** - 8  
**MCWA75**