

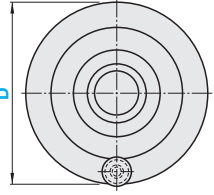
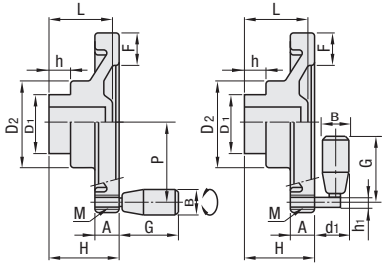
# Solid Disk Handwheels / Adjusting Collars

## Solid Disk Handwheels

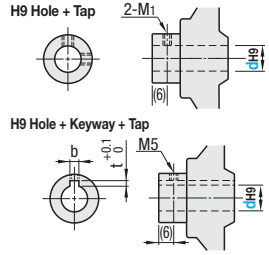
RoHS 10



Shaft Bore Config.	Type		Hub		Handwheel		Handle Mounting Hole		Handle		Handle Thread	
	Stationary Handles	Folding Handle	Material	Surface Treatment	Material	Material	Material	Material	Material	Material	Surface Treatment	
No Hole	PHSN	PHSFN	FC200	Black Oxide	Phenol	Brass	Phenol	SUM21	Trivalent Chromate			
	AHSN	AHSFN	Aluminum Alloy	-	Aluminum Alloy	Aluminum Alloy						
H9 Hole + Tap	PHSM	PHSFM	FC200	Black Oxide	Phenol	Brass	Phenol	SUM21	Trivalent Chromate			
	AHSM	AHSFM	Aluminum Alloy	-	Aluminum Alloy	Aluminum Alloy						
H9 Hole + Keyway + Tap	PHSK	PHSKF	FC200	Black Oxide	Phenol	Brass	Phenol	SUM21	Trivalent Chromate			
	AHSK	AHSFK	Aluminum Alloy	-	Aluminum Alloy	Aluminum Alloy						



$\varnothing$  d is a through hole.



$\varnothing$  Stationary Handles are GRW on P.1151.

$\varnothing$  Folding Handles are GRMBM on P.1151.

$\varnothing$  Both Stationary Handles and Folding Handles make rotation.

Part Number	PHSM, PHSFM AHSM, AHSFM			PHSK, PHSKF AHSK, AHSFK			H	A	F	D <sub>1</sub>	D <sub>2</sub>	h	L	d <sub>1</sub>	h <sub>1</sub>	M (Coarse)	P	B		G		Reference Mass (g)					
	Type	D	d Selection	M <sub>1</sub> (Coarse)	d	b												t	PHS	PHSF	PHS	PHSF	PHS	AHS	PHSF	AHSF	
(Phenol)		80	10	5	10	3	1.4	35	13	15	28	36	14	30	24	9	8	34			40	55	181	201	200	220	
PHSN	PHSFN	100	12		12	4	1.8	40	15	17	32	39		36				41	20	20			277	324	296	343	
PHSM	PHSFM	125	12, 16					44		19	39	46		38				52					55	81	405	468	428
(Aluminum)		150	15, 20	6	15			48	18	21	39	48	15					64			67	104	570	729	618	777	
AHSN	AHSFN	*175	16, 20		16	5	2.3	53	19	24	48	56		43	31	11	10	74		23	23			859	-	907	-
AHSM	AHSFM	*200	16, 20					57	21	27	48	61						86	23			75		1017	-	1062	-

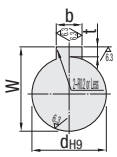
\* D175 and D200 are not available for Aluminum Type.

Ordering Example: Part Number - d  
PHSN80 - 12  
PHSM100 - 12

D	Unit Price											
	PHSN	PHSFN	PHSM	PHSFM	PHSK	PHSKF	AHSN	AHSFN	AHSM	AHSFM	AHSK	AHSFK
80												
100												
125												
150												
175												
200												

### New JIS (B1301) Keyway Dimensions

dH9	W	bJS9	t <sup>-0.1</sup>
10	11.4	3	±0.0125
12	13.8	4	±0.0150
15	17.3	5	±0.0150
16	18.3		

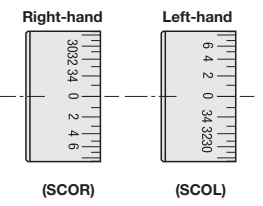
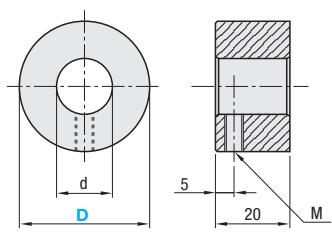


## Adjusting Collars

RoHS 10



Type	Material	Surface Treatment
Right-hand / Left-hand	A5056	Black Anodize
SCOR / SCOL		



The scale engraving angle can be selected from either 10° or 15°.

Angle selection 10° is shown in the diagram.

Part Number	D	Angle Selection	d	M	Mass (g)	Unit Price
SCOL (Left)	22	10 15	8	M4	20	
SCOR (Right)	27		12	M4	25	
	35		15	M5	40	
	45		16	M5	72	

Ordering Example: Part Number - Angle  
SCOR35 - 10

