

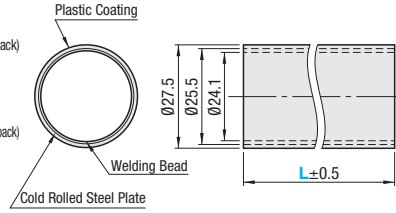
Note that, for some of the types shown here, order might be unable to be received by the MISUMI Malaysia, and/or Indonesia offices.

Pipe Frames / Curved Pipe Frames



Standard
PFS (L Configurable)
PFSKS (Base Material, 5 pcs./pack)

Antistatic
PFST (L Configurable)
PFSTKS (Base Material, 5 pcs./pack)



Type	Steel Pipe Frame		Plastic Coating
	M Material	S Surface Treatment	M Material
PFS, PFSKS	SPCC (Thickness 0.7mm)	Hot Zinc Plating + Non-Chromate Antirust Treatment	AAS Coating
PFST, PFSTKS			Conductive ABS Coating

■ L Configurable

Part Number Type	No.	Color	L 1mm Increment	Mass kg/m	Unit Price /m 1 ~ 100 pc(s).
PFS (Standard)	28	W (White)	60~3000	0.53	
		V (Ivory)			
		S (Dark Gray)			
		Y (Yellow)			
PFST (Antistatic)		B (Black)			
		TV (Ivory)			
		TS (Blue Gray)			

■ 4020mm Base Material, 5 pcs./set 5 pcs./set

Part Number Type	No.	Color	L Length (mm)	Mass kg	Unit Price 1 - 19 set(s)	Volume Discount Rate 20 ~ 60 sets
PFSKS (Standard) (5 pcs./set)	28	W (White)	4020 (5 pcs./set)	10.6		
		V (Ivory)				
		S (Dark Gray)				
		Y (Yellow)				
PFSTKS (Antistatic) (5 pcs./set)		B (Black)				
		TV (Ivory)				
		TS (Blue Gray)				

±5mm tolerance for base material with length 4020mm.



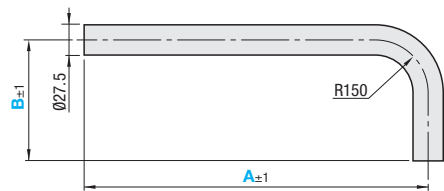
Ordering Example
Part Number - **Color** - **L**
PFS28 - **W** - **1250**
PFSKS28 - **S**

■ Surface Resistivity of Antistatic Type

Type	No.	Color	Surface Resistivity
PFST	28	B	10 ⁷ ~10 ⁹ Ω
		TV TS	10 ⁷ ~10 ⁹ Ω



PFSMG
(Standard)



Type	M Material
PFSMG	Hot Zinc Plating Steel Pipe Frame SPCC Thickness 0.7mm Plastic Coating AAS, ABS Coating Thickness 1.0mm

Part Number Type	No.	Color	A 1mm Increment	Unit Price 1 ~ 100 pc(s).							
				B 1mm Increment							
				200~300	301~400	401~500	501~600	601~700	701~800	801~900	901~1000
PFSMG	28	W (White) V (Ivory) S (Dark Gray)	200~300								
			301~400								
			401~500								
			501~600								
			601~700								
			701~800								
			801~900								
901~1000											



Ordering Example
Part Number - **Color** - **A** - **B**
PFSMG28 - **W** - **A300** - **B800**