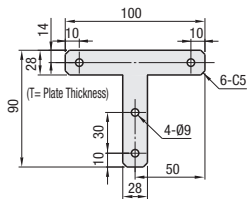
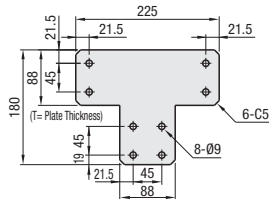


Type	Material	Surface Treatment
HPTTS	SPHC	Trivalent Chromate
HPTTD		
HPTPS		
SHPTTS	SUS304	-

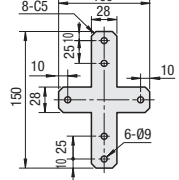
**HPTTS8  
SHPTTS8**



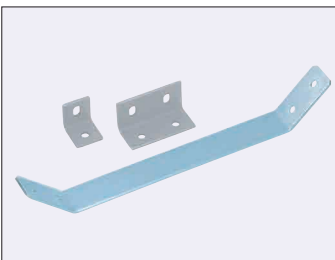
**HPTTD8-45**



**HPTPS8**



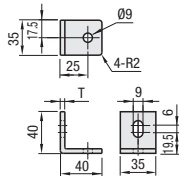
Part Number	Mass g	T	Applicable Screw and Nut				Unit Price	Volume Discount Rate	
			Screw	Quantity	Nut	Quantity			
HPTTS8*	103	3.2	M8-15	4	M8	4			
SHPTTS8*		3						4	
HPTTD8-45	633	3.2						8	8
HPTPS8*	135	3.2						6	6



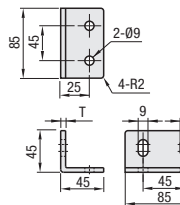
RoHS10

Type	Material	Surface Treatment
HPTBS	SPHC	Trivalent Chromate
HPTGS		
SHPTBS		
SHPTBD	SUS304	-

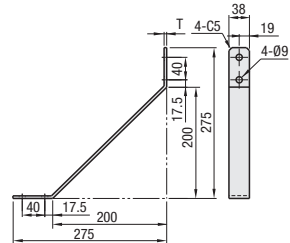
**HPTBS8  
SHPTBS8**



**SHPTBD8-45**



**HPTGS8**



Part Number	Mass g	T	Applicable Screw and Nut				Unit Price	Volume Discount Rate	
			Screw	Quantity	Nut	Quantity			
HPTBS8*	83	4.5	M8-15	2	M8	2			
SHPTBS8*		4						4	
SHPTBD8-45	234	4						4	4
HPTGS8*	560	4.5						4	4

Ordering Example **Part Number**  
SHPTBD8-45

Alterations **Part Number** - (SET)  
SHPTBD8-45 - SET

Alteration	Code	Spec.	Part Number	
Applicable Screws and Nuts Set	SET	Applicable screws and nuts for mounting each plate on extrusions come in a set.	HPTTS8*	
			SHPTTS8*	
		Material	Set	HPTTD8-45
		SPHC	Screw: CBM	HPTPS8*
			Nut: HNTT	HPTBS8*
		SUS304	Screw: SCB	SHPTBS8*
Nut: HNTTSN	SHPTBD8-45			
		HPTGS8*		

\*8\* is in common with 8-45.

