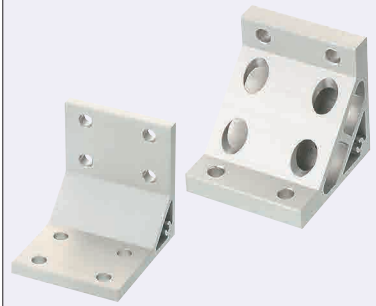


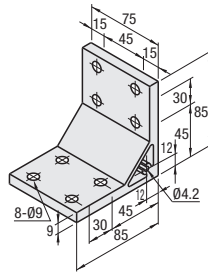
■ **Features:** Brackets for 2-slot extrusions with 4 mounting holes on one side can connect extrusions more securely.

■ **Thick Brackets**



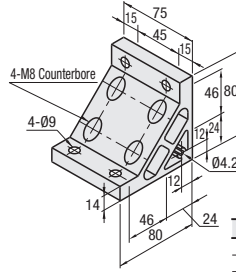
Thick Brackets

HBLTDW8-45



Ultra Thick Brackets

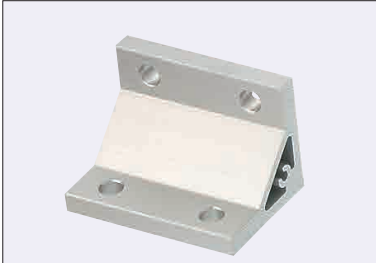
HBLUDW8-45



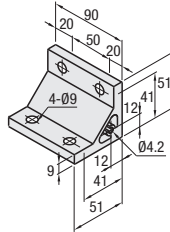
Type	Material	Surface Treatment
HBLTDW8-45	A6N01SS-T5	Anodize
HBLUDW8-45	A6N01SS-T5	Anodize

Part Number	Mass (g)	Applicable Screw, T Nut				Allowable Load (N)	Unit Price 1-99 pc(s)	Volume Discount Rate 100-200
		Screw	Quantity	T Nut	Quantity			
HBLTDW8-45	287	CBM8-20	8	HNTT8-8	8	4410		
HBLUDW8-45	359	CBM8-15	4		8	5586		
		CBM8-25	4					

■ **Features:** Extruded Brackets for 2-slot extrusions (100 square).



HBLTD8-100



Type	Material	Surface Treatment
HBLTD8-100	A6N01SS-T5	Anodize

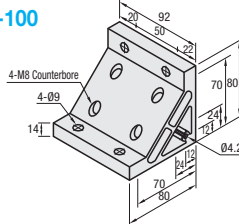
Part Number	Mass (g)	Applicable Screw, T Nut				Allowable Load (N)	Unit Price 1-99 pc(s)	Volume Discount Rate 100-200
		Screw	Quantity	T Nut	Quantity			
HBLTD8-100	181	CBM8-20	4	HNTT8-8	4	2940		

■ **Features:** Brackets for 100 square Extrusions with 4 mounting holes on one side.



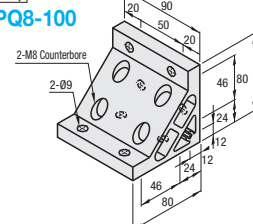
For 100 Sq.

HBLUW8-100



For 100 Sq.

HBLPQ8-100



Material: A6N01SS-T5 Surface Treatment: Anodize

Part Number	Mass (g)	Extrusion Series	Applicable Screw, T Nut				Allowable Load (N)	Unit Price 1-99 pc(s)	Volume Discount Rate 100-200
			Screw	Quantity	T Nut	Quantity			
HBLUW8-100	440	HFS8-50100	CBM8-15	4	HNTT8-8	8	5586		
			CBM8-25						
HBLPQ8-100	470	GFS8-50100	CBM8-15						
			CBM8-25						



Ordering Example Part Number **HBLTD8-45**

Alterations Part Number - HBLTD8-45 (C, SET, SST, SEU, SSU, SEP, SSP, SEC) SET

Alterations	Code	Spec.	Applicable Bracket
Mounting Hole Alteration for Cover	C	Adds taps on a bracket for cover mounting. (M5 on Both Sides) (Mounting Screw HCBM on P.754)	HBLFSDW8-100
			HBLTD8-45
			HBLUD8-45
			HBLTDW8-45
			HBLUDW8-45
			HBLTD8-100
			HBLUW8-100
			HBLPQ8-100



Alterations	Code	Spec.	Applicable Bracket		
Applicable Screws and Nuts Set	SET	Applicable screws and nuts for fixing the brackets on extrusions come in a set. (Adds to the bracket price) (Ex.) When HBLTD8-45 is specified:	HBLFSDW8-90		
	SST		HBLFSDW8-100		
	SEU		NBLTD8-45		
	(Pre-Assembly Insertion) Spring Nuts		Code	Screw	Nut
	SSU		SET	CBM8-20	HNTT8-8
	(Pre-Assembly Insertion) Spring Nuts		SST	SCB8-20	HNTT8-8
	SSU		SEU	CBM8-20	HNTU8-8
	(Post-Assembly Insertion) Spring Nuts		SEP	SCB8-20	SHNTU8-8
	SSP		SEP	CBM8-20	HNTP8-8
	(Post-Assembly Insertion) Spring Nuts		SSP	SCB8-20	SHNTP8-8
	SEC		SEC	HCBST8-24	HNTT8-8
	(Screws with Captured Washer and Nuts)		When specifying other than HBLTD8-45, check for the applicable screws and nuts.		HBLUW8-100
					HBLPQ8-100

⚠ Included Screw is not RoHS compliant when -SET, -SEU or -SEP are specified.