

Cover Screws

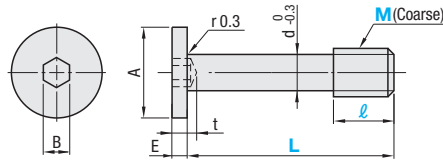
Extra Low Head, Low Head, Button Head Cap

Extra Low Head



RoHS10

GUTBG



Reference Tensile Breaking Load (N)

M3	1160
M5	2520

*The above data are for reference, not guaranteed.

Material: SUS304 Equivalent

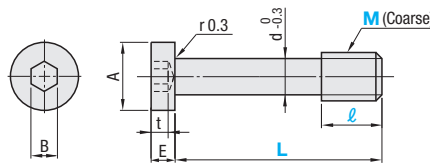
Part Number Type		M	ℓ	L	A	E	B	d	t max.	Unit Price	Volume Discount Rate
										1 ~ 29 pc(s).	30 ~ 300 pcs.
GUTBG	3	M3	2	5 6 8 10	6	1.3	1.5	2.2	2		
			3.5	6 8 10							
			4	8 10							
	4	M4	3	6 8 10 12	8	1.5	2	3	2.5		
			5	10 12							
	5	M5	3	8 10 12 16	9	1.5	3	3.9	3		
			6	12 16							
	6	M6	4	8 10 12 16 20	10	1.5	3	4.5	4		
			8	12 16 20 25							
	8	M8	5	10 12 16 20	13	1.5	4	6.3	5		
			10	12 16 20 25							

Low Head



RoHS10

GUTBT



Reference Tensile Breaking Load (N)

M3	1390
M5	4300

*The above data are for reference, not guaranteed.

Material: SUS304 Equivalent

Part Number Type		M	ℓ	L	A	E	B	d	t max.	Unit Price	Volume Discount Rate
										1 ~ 29 pc(s).	30 ~ 300 pcs.
GUTBT	3	M3	2	6 8	5.5	2	2	2.2	1.5		
			3.5	6 8 10 12							
			4	8 10 12 16							
	4	M4	3	6 8 10 12 16	7	2.8	2.5	3	2.3		
			5	10 12 16 20							
	5	M5	6	12 16 20 25	8.5	3.5	3	3.9	2.7		
			4	12 16							
	6	M6	8	12 20 25 30	10	4	4	4.5	3		
			8	12							
	8	M8	5	10 12 16	13	5	5	6.3	3.8		
			10	20 30 40							



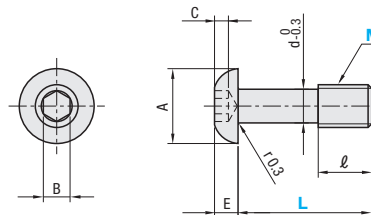
Ordering Example Part Number - ℓ - L
 GUTBG5 - 3 - 16
 GUTBT8 - 10 - 20

Button Head Cap Screws



RoHS10

CBBT



Strength Class: A2-50 Equivalent

Material: SUS304 Equivalent

Part Number Type		M	L	ℓ	A	E (Max.)	B	C (Min.)	d	Unit Price	Volume Discount Rate
										1 ~ 29 pc(s).	30 ~ 50 pcs.
CBBT	3	M3	8 10 12 15 20	4	5.5	1.6	2	1.04	2.2		
			4 10 12 15 20	5	7.5	2.2	2.5	1.3	3		
	5	M5	12 15 20 25	6	9.5	2.7	3	1.56	3.9		
			12 15 20 25	8	10.5	3.3	4	2.08	4.5		
	8	M8	12 15 20 25	10	14	4.4	5	2.6	6.3		
			12 15 20 25								



Ordering Example Part Number - L
 CBBT5 - 20