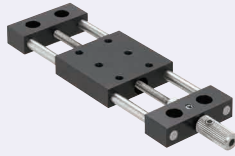


# [Simplified Adjustments] X-Axis, Feed Screw, Stroke Selectable

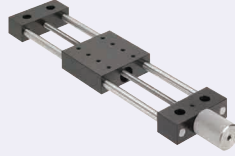
## Standard/Large Handle, M6 Mounting Holes

**Features:** This series features freely selectable long stroke length/table size combinations. Easy-to-use large Handwheel Type in vertical applications and types with M6 mounting holes on the top plate are also available.

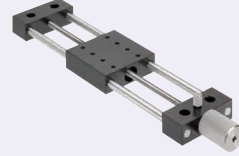
### Standard Handle



### Large Handle



### (Large Handle, Knurled Knob Clamp)



RoHS10

Travel per Rotation  
0.7mm(T=10) 1.0mm(T=20)

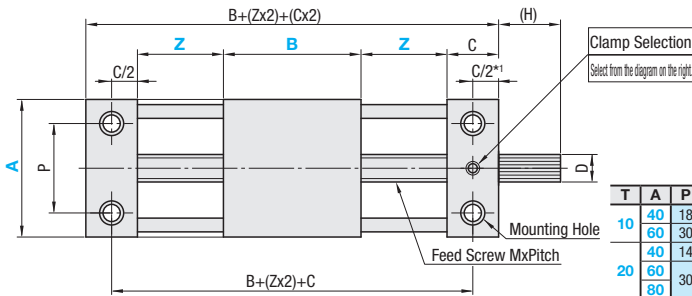
	Type		Main Body		Shaft	Knob	Feed Screw	Accessory
	Standard Handle	Large Handle	Material	Surface Treatment	Material	Material	Material	
M4 Mounting Hole	XKNEF	XKFL	Aluminum Alloy	Black Anodize	SUS304	SUS303	SUS304	T=10 SCB4-10, 4 pcs.
M6 Mounting Holes	XKFM	XKFML						T=20 SCB5-20, 4 pcs.

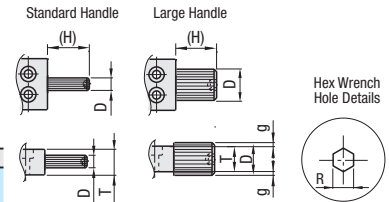
Type	T	D	(H)	C	MxPitch	M1	d1	d2	ℓ	R	g	t
XKNEF	10	7	16	15	M4xP0.7	3	4.5	7.5	4.2	2.5	-	5
	20	10	30	25	M6xP1.0	4	5.5	9	5.2	4	-	10
XKFL	10	15	16	15	M4xP0.7	3	4.5	7.5	4.2	5	2.5	5
	20	24	30	25	M6xP1.0	4	5.5	9	5.2	8	2	10

- Table surfaces and bottoms are 0.5mm higher than the end mounts.
- For accuracy standards, see the next page.
- There are two handle sizes available to accommodate the T dimension. For details, see the table on the upper left. Large handle can cause interference, when used with main body plate due to its large height size.
- Large handle can be used in horizontally placed configuration by specifying MMR Alteration.
- Large Lead Type with 3.0mm travel per Rotation is also available. (P1912)
- Do not force the handle to turn past the end of the travel limits as it may cause the handle to come loose.

XKNEF (Standard Handle, M4 Mounting Holes) XKFL (Large Handle, M4 Mounting Holes)  
XKFM (Standard Handle, M6 Mounting Holes) XKFML (Large Handle, M6 Mounting Holes)

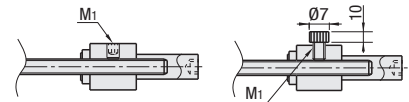


### Handle Shape Comparisons

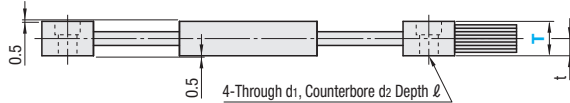


### Clamp Selection

S (Standard Set Screw) K (Knurled Knob)



\*1 When A=40 and T=20, tapped holes for clamping will be C/2=6mm in order to avoid interferences with the counterbored holes.



### Stage Top Mounting Hole Dimensions (A-B) (\* marked only for XKFM and XKFML)

