

Indexing Plungers

Coarse/Fine Thread Lever

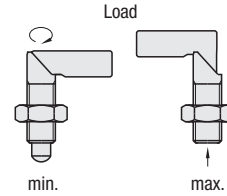
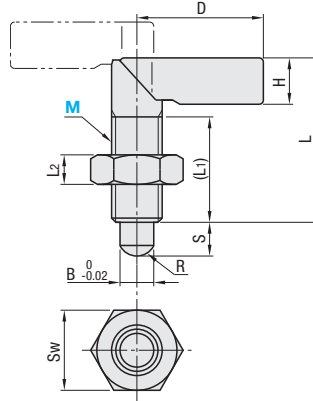
Features: The pin can be operated by turning the lever making it useable in limited spaces. The pin is retractable in the body by 180° turn of the lever. The lever can be locked by the notch.

Coarse Thread Lever



RoHS10

Type	Screw	Lever		Main Body		Pin		Spring	Lock Nut		
		M Material	S Surface Treatment	M Material	S Surface Treatment	M Material	H Hardness	S Surface Treatment	M Material	S Surface Treatment	
PMXRB	Coarse Thread	S45C	Black Oxide	S45C	Black Oxide	S45C	45HRC~	Black Oxide	SUS304-WPB	SWCH	Black Oxide
PMXRM			Electroless Nickel Plating		Electroless Nickel Plating						Electroless Nickel Plating



Part Number		Pitch (Coarse Thread)	B	S	L	(L1)	D	H	L2	Sw	R	Load (N)		Mass (g)	Unit Price	
Type	M											min.	max.		PMXRB	PMXRM
PMXRB	10	1.5	5	5	34	20	24	8	6	17	3	5	9.5	22		
PMXRM	12	1.75	6	6	39	25	30	11	7	19	3.5	8	13	33		

kgf=Nx0.101972



Ordering Example

Part Number

PMXRB10

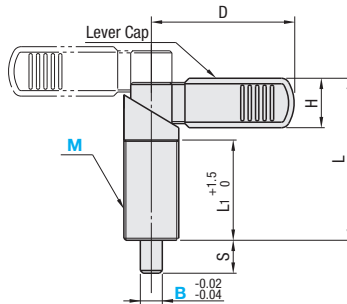
Fine Thread Lever



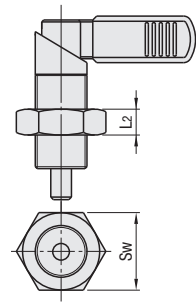
RoHS10

Type	Lever Cap	Main Body		Pin		Spring	(Lock Nut)	
	M Material	M Material	S Surface Treatment	M Material	H Hardness	S Surface Treatment	M Material	S Surface Treatment
PXVB	Nylon 6 (Mat Black)	SUM22L	Black Oxide	S45C	50~60HRC	Black Oxide	SWP-B	-
PXVBK								-
SPXVB		SUS303	-	SUS303	-	Nickel Plating	SUS301	-
SPXVBK							SUS303	-

PXVB
SPXVB



With Lock Nut
PXVBK
SPXVBK



Part Number		Pitch (Fine Thread)	B (Selection)	S	L	L1	D	H	L2	Sw	Unit Price			
Type	M										PXVB	PXVBK	SPXVB	SPXVBK
(Steel)	16	1.5	6 8 10	10	47	30	42	15.5	8	24				
(Stainless Steel)											SPXVB			
PXVB	20	1.5	8 10 12	12	59	36	52	19	10	30				
PXVBK											SPXVBK			



Ordering Example

Part Number - B

PXVB16 - 8

SPXVBK20 - 12

Mass and Load

M	B	Mass (g)	Load (N)	
			min.	max.
16	6	79	12	32
	8	80		
	10	82		
20	8	112	21	58
	10	115		
	12	118		

kgf=Nx0.101972