

Feed Fingers

■ **Features:** The minimal 20.5mm height has been added to the lineup. Best for use in limited spaces.



RoHS10

Feed Fingers are composed of ①Claw, ②Spring and ③Main Body. By selecting each type of components, the unit can be assembled before shipping.

	①Claw	②Spring	③Main Body
ATBM	28A 28B 20A 20B	S H	BT PI
ATBS	14A 14B		BL BH BT PI
ATBJ	10A 10B 7A 7B 7SA 7SB*1	S H	
ATBST	10A 10B	S H	BLS BHS BTS TPS

① *1 "7SB" is available for ATBM only.

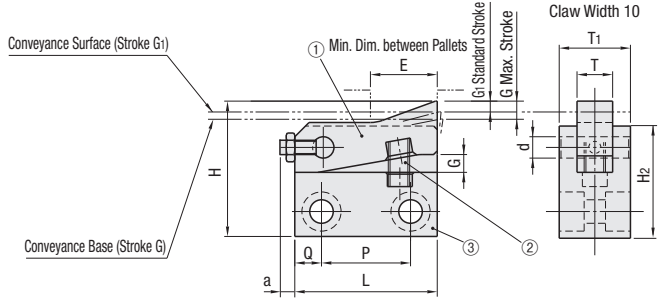
Type	Material	Surface Treatment	Hardness
ATBS	SUS304	-	-
ATBST		Tufride	Tufride (Depth 0.01) HV1000
ATBJ	MC Nylon	-	-

② Spring
 ■ SUS304 Tufride is gray.
 ■ SUS304 Tufride has lesser antitrust effect compared to SUS304.

③ Main Body, Pin
 ■ Material: SUS304-WPB

Type	Main Body		Accessory (Pin)	
	Material	Surface Treatment	Material	Surface Treatment
BL BH BT TP PI	SS400	Electroless Nickel Plating	S45C	Electroless Nickel Plating
BLS BHS BTS TPS	SUS304	-	SUS303	-

Accessory: (For BH and BHS only)		
Claw	BH	BHS
14A, 14B	WSSM25-8-3x2 pcs.	-
10A, 10B	WSSM20-6-3x2 pcs.	WSS20-6-3x2 pcs.



Part Number Type	①Claw	②Spring	③Main Body	T	T1	d	H	H2	L	P	Q	a	G	G1	Unit Price						
															ATBM	ATBJ	ATBS	ATBST			
ATBM (SS400 + Electroless Nickel Plating) ATBJ (MC Nylon)	7SA 7SB	S (Soft)	BL Side Mounting Type (Screw Hole)	7	12	6	29	22.5	30	20	5	2.5	5	3	-	-	-	-			
			TP Side Mounting Type (Tapped Hole)																		
			BT Bottom Mount Type																		
	PI π-Shaped Type																				
	BL Side Mounting Type (Screw Hole)		7	12	6	38	31	40	25	7.5	2	5	3								
	TP Side Mounting Type (Tapped Hole)																				
ATBM (SS400 + Electroless Nickel Plating) ATBS (SUS304) ATBST (SUS304 + Tufride) ATBJ (MC Nylon)	10A 10B	H (Hard)	BL Side Mounting Type (Screw Hole)	10	19	6	38	31	40	25	7.5	2.5	5	3							
			BH Side Mounting Type (Through Hole)																		
			TP Side Mounting Type (Tapped Hole)																		
			BT Bottom Mount Type																		
			PI π-Shaped Type																		
			BLS Side Mounting Type (Screw Hole)																		
	14A 14B			BH Side Mounting Type (Through Hole)	14	25	8	55.5	43	55	35	10	2.5	10	5						
				TP Side Mounting Type (Tapped Hole)																	
				BT Bottom Mount Type																	
				PI π-Shaped Type																	
				BL Side Mounting Type (Screw Hole)																	
				BH Side Mounting Type (Through Hole)																	
ATBM (SS400 + Electroless Nickel Plating)	20A 20B		BT Bottom Mount Type	20	38	10	63	49	65	40	12.5	4.5	10	5							
			PI π-Shaped Type																		
	28A 28B			BT Bottom Mount Type	28	50	12	83	64	80	50	15	7	12	7						
	PI π-Shaped Type																				

Dimension Details ①Claw

■ **Straight Type**

7SA 14A
7A 20A
10A 28A

■ **Round Type**

7SB 14B
7B 20B
10B 28B

5/((63/15/))

■ Claw Position of Straight Type

■ Standard Stopping Position for Round Type

Type	T	L				G	E				R	H1	J	K	MA	d	f	C	t1	t2	t3
		Straight Claw	Round Claw	L1	B		Straight Claw	Round Claw	R	H1											
ATBM ATBS ATBST ATBJ	7SA 7SB	7	30	31.5	7.5	7.5	5	15	13.9	24	16	10	5	M3*	6	15.7	3	1.8	1.2	0.7	
	7A 7B	10	40	41.5	8	15		17	15.9	33.5	20	14	7	M4*		21	4	1.6	1	0.5	
	10A 10B	14	55	57	10	12.4	10		32.6	30	47	30.5	19	10	M4*	8	35.8	5	3.3		0.8
	20A 20B	20	65	66.5	12.5	18.5	11		34	30.4	54	33	21	10	M5	10	40	7	3.4	2	1.5
	28A 28B	28	80	82.5	15	30	13		35	30.5	67.5	45	30	15	M6	12	50	9	4.5	2.8	1.8

① ATBM is available for 28A, 28B, 20A, 20B and 7SB only.
 * ATBJ is for threaded insert.