

Precision Rollers

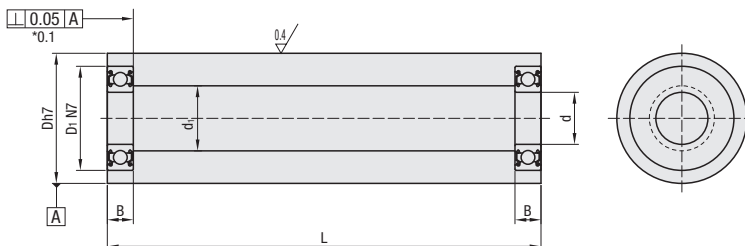
■ **Features:** This roller has good O.D. Tolerance and Geometrical Tolerance. Use in carriers that require accuracy.

■ **With Bearings**



RoHS10

Type	Material	Surface Treatment	O.D. Tolerance	Run-out		Perpendicularity		Circularity
				100-500mm	600-700mm	100-500mm	600-700mm	
RORSPM	S45C	Electroless Nickel Plating	h7	5/100	0.1	5/100	0.1	5/100
RORSPA	Aluminum Alloy	Clear Anodize						



* Perpendicularity of L dimension 600 and 700 is 0.1.

Part Number			d	L Selection		Bearing Used	d1		D1	B		
TYPE	D	d Tolerance		S45C	Aluminum		S45C	Aluminum Alloy				
RORSPM RORSPA	30	0 -0.021	8	100 150 200 300 400 500	100 150 200 300 400 500	B608ZZ	15.8	15	22	7		
			10			B6900ZZ			22	6		
			12			B6901ZZ			24	6		
	40	0 -0.025	10			B6000ZZ	21	22	26	8	28	8
			12			B6001ZZ			28	7		
			15			B6902ZZ			32	7		
	50	0 -0.025	12			B6804ZZ	30	27	37	12	35	11
			15			B6301ZZ			37	9		
			20			B6202ZZ			37	9		
			25			B6904ZZ			42	9		
			30			B6905ZZ			42	9		
	60	0 -0.030	15			B6302ZZ	35	32	42	13	47	9
			20			B6904ZZ			37	9		
			25			B6905ZZ			42	9		
			30			B6906ZZ			47	9		
	80	0 -0.030	25			B6305ZZ	49	41	62	17	62	16
			30			B6206ZZ			62	16		
			35			B6007ZZ			62	14		

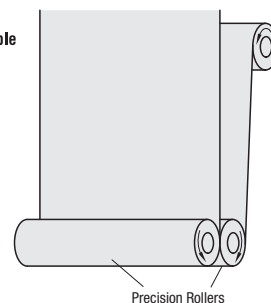


Ordering Example

Part Number - d - L
RORSPM50 - 12 - L300



Example



■ **S45C**

D	Unit Price					
	L100	L150	L200	L300	L400	L500
30						
40						
50						
60						
80						

■ **Aluminum**

D	Unit Price							
	L100	L150	L200	L300	L400	L500	L600	L700
30								
40								
50								
60								
80								



Alterations



Part Number - d - L [L/C]
RORSPA30 - 10 - LC413

Alterations	L Dimension
Spec.	<p>Ordering Code LC151 (Change L to LC) LC=1mm Increment ⊕ S45C, Aluminum Ø30, 40 50≤LC≤490 ⊕ Aluminum Ø50, 60, 80 50≤LC≤690</p>
Code	LC