

Urethane Rollers / End Feed Rollers

With Side Through Holes

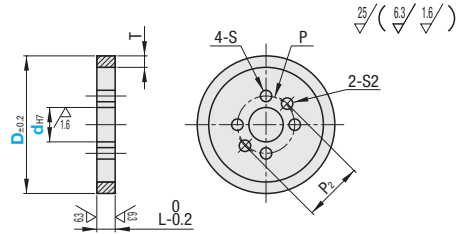
■ **Features:** Can be used as a set with shaft collar shown on P.279, 281.

Urethane Rollers with Side Through Holes



Type	Material		Hardness
	Core	Lining	
ULSH	A5052	Urethane	A90

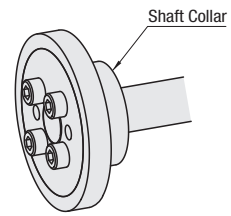
⚠ Urethane is baked on the outer circumference of the core material.



Part Number Type	D	d Selection	L	T	P	P2	S	S2	Unit Price
ULSH	40	10	8	5	18	20	4.5	5.5	
		12			22	22	5.5	5.5	
	50	12			25	26	6.5	6.5	
		15			25	26	5.5	5.5	
	60	15			32	34	6.5	6.5	
		20			25	26	5.5	5.5	
	70	15	32	34	6.5	6.5			
		20	37	38	6.5	6.5			
	80	20							
		25							

⚠ Shaft collar shown on P.281 may not be installable depending on the B size.

Ordering Example **Part Number** - **D** - **d**
ULSH - **40** - **10**



Alterations **Part Number** - **D** - **d** - **(MC)**
ULSH - **40** - **10** - **MC**

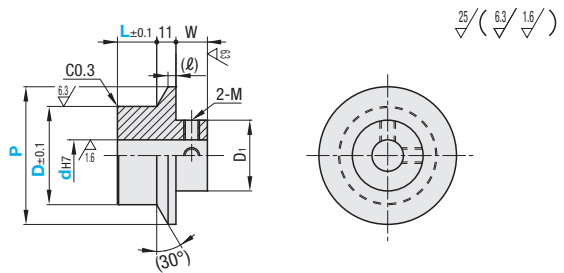
Alteration Code	Tapping MC
Spec.	Change S to tapped hole
	S M
	4.5 M4
	5.5 M5
	6.5 M6
Ordering Code MC	

End Feed Rollers



RoHS10

Type	Material
MCRPOM	Polyacetal
MCRUPE	UHMWPE



Part Number Type	D	d					P					L 1mm Increment	W	ℓ	D1	M	Unit Price		
		6	8	10	12	15	40	45	50	55	60						MCRPOM	MCRUPE	
MCRPOM MCRUPE	30	6	8	10	12		40	45	50	55	60	3-10	8	13-(P-D)/√3 (4.34-10.11)	d+20	4			
	35	6	8	10	12	15		45	50	55	60						65		
	40	8	10	12	15	20		50	55	60	65						70		
	45	10	12	15	20			55	60	65	70						75		
	50		12	15	20			60	65	70	75		80						
	55			15	20	30			65	70	75		80						
	60			15	20	30			70	75	80								

Ordering Example **Part Number** - **d** - **P** - **L**
MCRPOM30 - **8** - **50** - **3**

