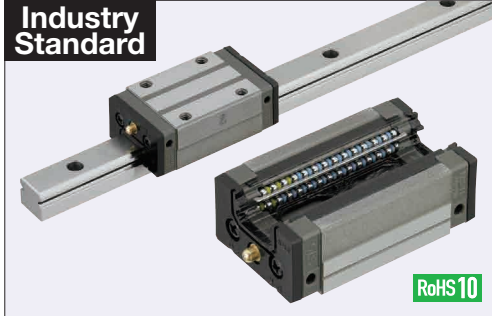


# Linear Guides for Heavy Load - Stainless Steel

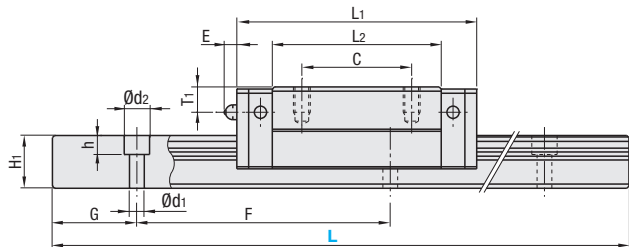
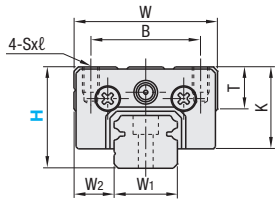
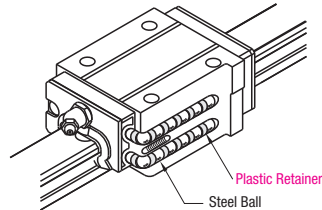
## With Plastic Retainers, Interchangeable, Light Preload

**Features:** Linear Guides with Plastic Retainers prevent contact between balls and result in low noise levels under high-speed operation.



Material Hardness	Type		Block	Rail	L Dimension
	1 block	2 blocks			
Stainless Steel (SUS440C Equivalent) 57HRC~	SSXRZ	SSX2RZ	SSXRB	SSRZL	Selectable
	SSXRLZ	SSX2RLZ		SSRZLF	Configurable

Heat Resistant Temperature: 0 ~ 50°C



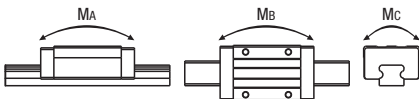
For L Configurable, G dimensions differ from those shown in the table below. For details, see P.531.

- Precautions for Use**
  - Blocks are equipped with retainers to prevent balls from falling off. For how to handle the blocks, see P.525.
  - For Interchangeable, Light Preload Type, rails and blocks can be interchanged.
  - Straight grooves are provided on datum planes. Be sure to match the datum lines when using.
  - Rails cannot be connected end to end.
  - The accuracy of Linear Guides is guaranteed after mounting the rail (after fastening screws on the rail and pushing it onto the datum plane).
  - Minor bending of the rail will be adjusted after being mounted and will not affect the performance.
- Others**
  - Filled with Lithium soap based grease (Alvania Grease S2 by Showa Shell Sekiyu K.K).
  - Grease Fittings: Straight Type for H24 and Angled Type for H28 and H33.
  - Grease Fitting is screw-in type, and thus, can be repositioned.
  - For Operating Life Calculation, see P.527
  - For operating life calculations, use our free calculation software from [http://download.misumi.jp/mol/fa\\_soft.html](http://download.misumi.jp/mol/fa_soft.html).

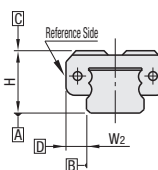
Part Number	Type		H	L	Block Dimension								Guide Rail Dimension								
	1 block	2 blocks			W	L <sub>1</sub>	B	C	Sxℓ	L <sub>2</sub>	K	T	Grease Fitting			H <sub>1</sub>	W <sub>1</sub>	W <sub>2</sub>	Counterbored Hole d <sub>1</sub> x <sub>2</sub> x <sub>h</sub>	F	G
													Mounting Hole	E	T <sub>1</sub>						
SSXRZ SSXRLZ	SSX2RZ SSX2RLZ	24	100-1480 (160)	34	56.8	26	26	M4x6	40	19.4	10	Ø3	3	6	12.5	15	9.5	3.5x6x4.5	60	20	
(Block)	(Rail)	28	160-1480 (220)	42	65.2	32	32	M5x7	48	22	12	M6xP0.75	11	5.5	15.5	20	11	6x9.5x8.5	60	20	
SSXRB	SSRZL SSRZLF	33	160-1480 (220)	48	81.6	35	35	M6x9	60	26	12	M6xP0.75	11	7	18	23	12.5	7x11x9	60	20	

L Dimension: Dimensions in ( ) are for 2-Block Type.

H	Basic Load Rating		Allowable Static Moment			Mass	
	C (Dynamic) kN	Co (Static) kN	MA N·m	Mb N·m	Mc N·m	Block kg	Guide Rail kg/m
24	7.9	15.6	74	62	78	0.20	1.4
28	11.1	21.8	124	104	149	0.28	2.3
33	17.9	33.5	242	203	266	0.51	3.1



### Preload and Accuracy Standards



### Interchangeable, Light Preload Type

#### Radial Clearance (µm)

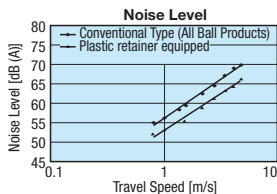
H24, 28	-4~0
H33	-5~0

#### Dimensional Accuracy (µm) Interchangeable

Height H Tolerance	±20
Pair Variation of Height H	15
Width W <sub>2</sub> Tolerance	±30
Pair Variation of Width W <sub>2</sub>	25
Running Parallelism of Plane C against Plane A	
Running Parallelism of Plane D against Plane B	

See P.525

### Features of Plastic Retainers: Low noise levels and improved sound quality



- Lack of mutual contact between balls results in low noise levels and improved sound quality.
- Since there is no mutual contact abrasion between the balls, particle generation is less than those of conventional products.