

Miniature Linear Guides - Wide Rails - Standard Blocks, Light Preload / Slight Clearance

Similar Products Comparison Points | The industry standard Wide Rails, Standard Blocks. Select from Light Preload Types with superior precision and rigidity.

Industry Standard



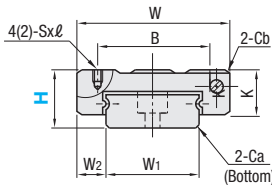
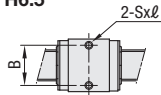
Material Hardness	Type			L Dimension	Number of Blocks
	Light Preload		Slight Clearance		
	High Grade	Precision Grade	Standard Grade		
Stainless Steel 56HRC-	SSEBW	SSEBWV	SSEBWZ	Selectable	1
	SSE2BW	SSE2BWV	SSE2BWZ		2
	SSEBWL	SSEBWLW	SSEBWLZ	Configurable	1
	SSE2BWL	SSE2BWLW	SSE2BWLZ		2

Heat Resistant Temperature: -20 ~ 80°C
 ⚠ H6.5 has no precision grade.

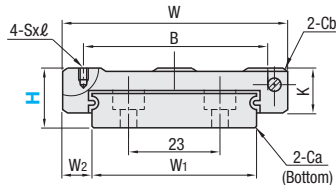
RoHS10

- ⚠ This Type has the same fitting dimensions as the other company products, and thus, can be substituted for them.
- ⚠ Blocks and rails are not sold as separate items. This Type has guaranteed radial clearances and accuracies as sets of blocks and rails.

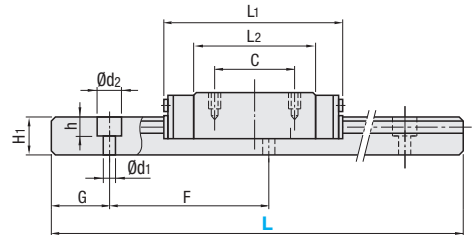
H6.5



H6.5, 9, 12, 14



H16



⚠ For L Configurable, G dimensions differ from those shown in the table below. For details, see P.531.

⚠ The number in () is the Number of tapped holes for H6.5.

Precautions for Use

- ⚠ Blocks are equipped with retainers (wire) to prevent balls from falling off. For how to handle the blocks, see P.525.
- ⚠ Radial clearances and accuracies are not guaranteed if the blocks and rails are interchanged from the original set combinations.
- ⚠ Straight grooves are provided on datum planes. Be sure to match the datum lines when using.
- ⚠ Rails cannot be connected end to end.
- ⚠ The accuracy of Linear Guides is guaranteed after mounting the rail (after fastening screws on the rail and pushing it onto the datum plane).

Minor bending of the rail will be adjusted after being mounted and will not affect the performance.

Accessory

- H6.5 comes with Number 0, Class 1 Phillips button head screws (M2.5x7).

Others

- Filled with Lithium soap based grease (Mulptemp Grease PS2 by Kyodo Yushi Co., Ltd.).
- For operating life calculation, see P.527.
- For operating life calculations, use our free calculation software from http://download.misumi.jp/mol/fa_soft.html.

Part Number	Type	H	L	Block Dimension							Guide Rail Dimension								
				W	L1	B	C	Sxl	L2	K	Cb	W1	W2	H1	Ca	Counterbored Hole d1xd2xh	F	G	
SSEBW SSE2BW SSEBWL SSE2BWL	SSEBWV SSE2BWV SSEBWLW SSE2BWLW	SSEBWZ SSE2BWZ SSEBWLZ SSE2BWLZ	6.5	50~130 (70)	17	21	13	-	M2.5x1.5	13.3	5	0.3	10	3.5	4	0.3	3x5x1.6	20	5
			9	50~290 (110)	25	31.1	18	12	M2.6x2.5	20.1	7	0.3	14	5.5	5.2	0.5	3.5x6x3.2	30	10
			12	50~290 (110)	30	38	21	12	M2.6x3	27	9	0.3	18	6	7.5	0.5	3.5x6x4.5	30	10
			14	70~470 (150)	40	44.3	28	15	M3x3.5	30.1	11	0.5	24	8	8	0.5	4.5x8x4.5	40	15
			16	70~670 (190)	60	55	45	20	M4x4.5	40	13	0.5	42	9	9.5	0.5	4.5x8x4.5	40	15

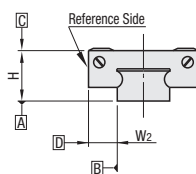
⚠ Dimensions in () are for 2-Block Type.

kgf=Nx0.101972

Unit: µm

H	Basic Load Rating/Allowable Static Moment			Mass			
	C (Dynamic) kN	Co (Static) kN	MA N·m	Mb N·m	Mc N·m	Block kg	Guide Rail kg/m
6.5	0.5	0.9	2.0	2.0	4.0	0.006	0.28
9	1.4	2.2	7.8	7.8	15.5	0.02	0.50
12	2.3	3.7	13.7	16.3	30.4	0.04	0.96
14	3.5	5.3	20.6	22.3	52.1	0.08	1.40
16	5.8	8.5	40.2	43.6	148	0.15	2.95

Preload and Accuracy Standards



Specifications	Light Preload, High Grade	Light Preload, Precision Grade	Slight Clearance, Standard Grade
Radial Clearance	-3~0	0~+15	0~+15
Height H Tolerance	±20	±10	±20
Pair Variation of Height H	15	7	40
Width W2 Tolerance	±25	±15	±25
Pair Variation of Width W2	20	10	40
Running Parallelism of Plane C against Plane A	See P.525		
Running Parallelism of Plane D against Plane A	See P.525		

⚠ Slight Clearance Type has clearance (Gap) between rails and blocks.
 If precision / rigidity is required, select Light Preload Type.

