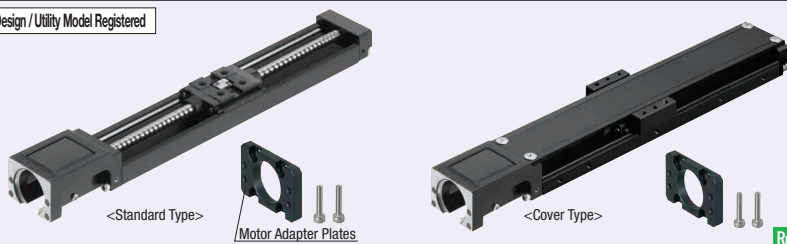


Single Axis Actuators LX15 Standard / Cover Type

Design / Utility Model Registered



Specifications	
LX15	
Standard / Cover	
Screw Shaft Dia. (mm)	5
Lead (mm)	2
Accuracy	High Grade / Precision Grade
Accessory	
① Motor Adapter Plate	
② Adapter Plate Screw 2 pcs.	
③ SUSXM7	

RoHS10

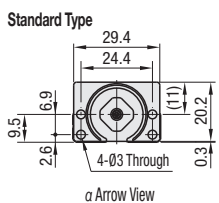
For Material table, see P.411

Part Number	Standard Grease		Low Dust Generation Grease		Lubrication Unit MX-equipped (Standard Grease)	
	High Grade	Precision Grade	High Grade	Precision Grade	High Grade	Precision Grade
Lead 2	LX1502 (C)	LX1502 (C) P	LX1502 (C) G	LX1502 (C) PG	LX1502 (C) -MX	LX1502 (C) P-MX

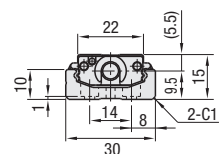
(C) is for Cover Type.

Low Dust Generation Grease Information P.414

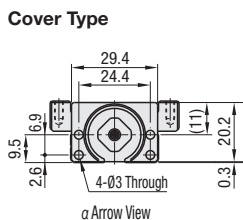
Lubrication Unit MX Information P.408



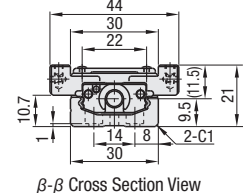
a Arrow View



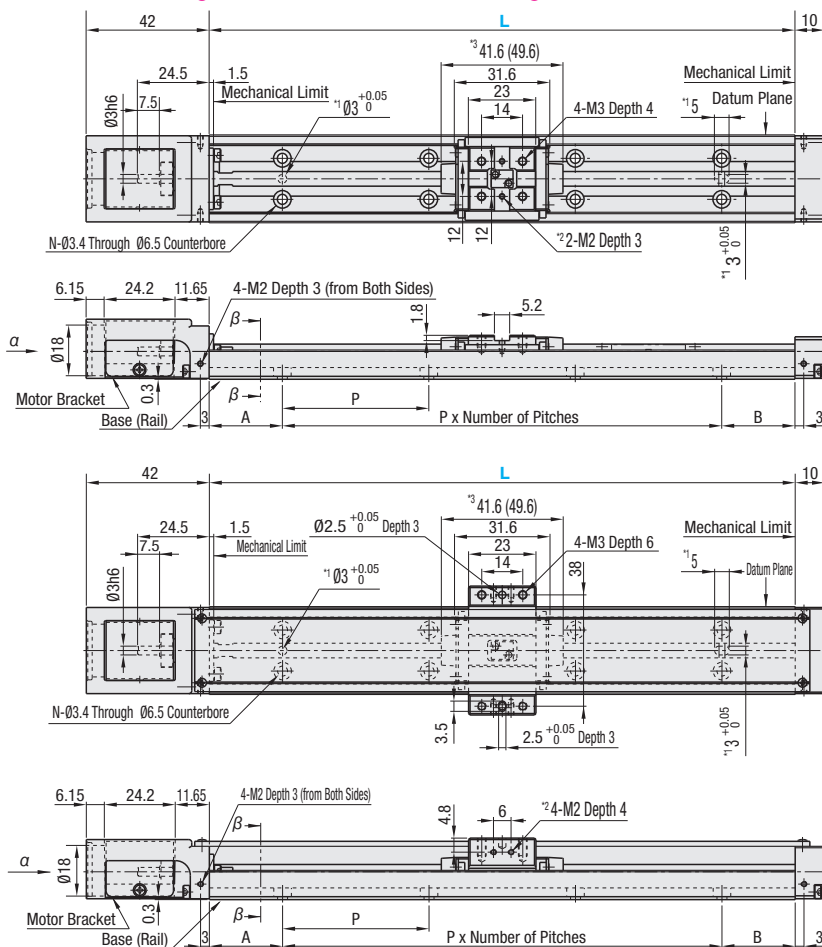
β-β Cross Section View



a Arrow View



β-β Cross Section View



Effective stroke is the value with 2.5mm margin on each side from mechanical limits, i.e., 5mm in total.

Precision specification value is the value achieved after fixing rails. (It is not a value before tightening the rail screws.) For values, see P.413

*1: Dowel Holes for Base Positioning

*2: Tapped Holes for Sensor Flag Mount

*3: Value in () is for Lubrication Unit MX-equipped Type.

Part Number	Block Qty.	Motor Adapter Plates	Base Length (L)	* Effective Stroke	Total Mass (kg)	Mounting Hole Dimensions					
						A	P	B	Number of Holes (N)		
(Standard Grease) LX1502 (C)	(1 pc.) B1	(Servo Motor) A1525 A1528	75	26.9	-	0.13	0.18	12.5	50	1	4
(Low Dust Generation Grease) LX1502 (C) G		(Stepping Motor) T1528 ST1528 UT1542 ST1542	100	51.9	43.9	0.17	0.22	25			
(Lubrication Unit MX-equipped, Standard Grease) LX1502 (C) -MX		(No Adapter Plate) N	125	76.9	68.9	0.22	0.28	12.5		2	6
			150	101.9	93.9	0.29	0.35	25			
			175	126.9	118.9	0.35	0.41	12.5			
			200	151.9	143.9	0.38	0.45	25		3	8

* Precision Certificate is enclosed with precision grade products. * Motor adapter plate and mounting screws are not included with No Adapter Plate Type. * Effective stroke is indicated in dimensions with a margin of 2.5mm each from the ends. * (C) is for Cover Type. * 0.002kg will be added to MX-equipped types.