

Shaft Supports Flanged Mount with Slit Type

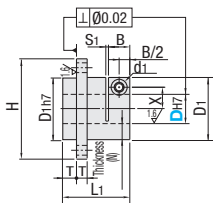
With Pilot / With Dowel Holes

■ **Features:** Easy positioning during assembly.

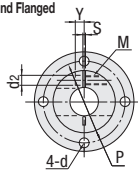


Round Flanged	Compact Flanged	Material	Surface Treatment	Accessory
STHWIRB	STHWICB	S45C	Black Oxide	Hex Socket Head Cap Screw 1 pc.
STHWIR	STHWIC	Equivalent	Electroless Nickel Plating	Hex Socket Head Cap Screw 1 pc. (SUS)
SSTHWIR	SSTHWIC	SUS304	-	

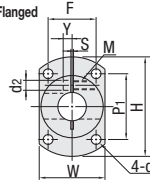
6.3 / (1.6 /)



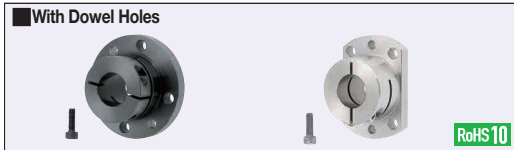
■ Round Flanged



■ Compact Flanged

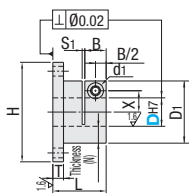


Part Number		Sleeve Thickness (N)	L1	D1	H	T	B	P	W	P1	F	d	S	S1	X	Y	d1	d2	M	Included Screw M x Length	Unit Price		
Type	DH7																				Round Flanged	Compact Flanged	
Round Flanged STHWIRB STHWIR SSTHWIR	8	+0.015 0	8.5	23	25	39	5	10	32	27	25	20	3.5	1.5	7.5	3.5	7.5	4.6	M4	M4x10			
	8M																						
	10	+0.018 0	10	25	30	49	6	12	46	37	37	27	5.5	1.5	12	5	9	5.6	M5	M5x12			
	12																						
	15																						
Compact Flanged STHWICB STHWIC SSTHWIC	16	+0.021 0	9.5	36	35	56	8	12	46	37	37	27	5.5	2	12	5	6	5.6	M5	M5x16			
	20																						
	25	+0.025 0	12.5	50	55	79	10	15	57	47	46	34	6.6	2	20	10	12	6.6	M6	M6x20			
	30																						
	40																						

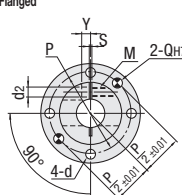


Round Flanged	Compact Flanged	Material	Surface Treatment	Accessory
STHWIRBK	STHWICBK	S45C	Black Oxide	Hex Socket Head Cap Screw 1 pc.
STHWIRK	STHWICK	Equivalent	Electroless Nickel Plating	Hex Socket Head Cap Screw 1 pc. (SUS)
SSTHWIRK	SSTHWICK	SUS304	-	

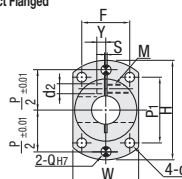
6.3 / (1.6 /)



■ Round Flanged



■ Compact Flanged



Part Number		Sleeve Thickness (N)	L	D1	H	T	B	P	W	P1	F	d	S	S1	X	Y	d1	d2	Q	M	Included Screw M x Length	Unit Price		
Type	DH7																					Round Flanged	Compact Flanged	
Round Flanged STHWIRBK STHWIRK SSTHWIRK	12	+0.018 0	10	22	32	52	6	10	42	34	35	25	4.5	1.5	11	4	9	5.6	4	M5	M5x12			
	16																							
	Compact Flanged STHWICBK STHWICK SSTHWICK	20	+0.021 0	10	32	40	64	8	12	52	42	43	30	5.5	1.5	14	6	6	5.6	5	M5	M5x16		
25																								
30		+0.025 0	12.5	40	55	79	10	15	67	57	50	45	6.6	2	20	10	12	6.6	6	M6	M6x20			

Ordering Example **Part Number**
STHWIR10
STHWIRBK25