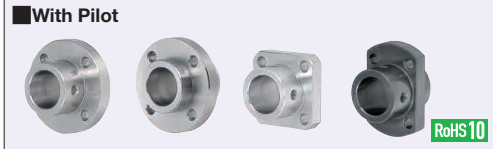
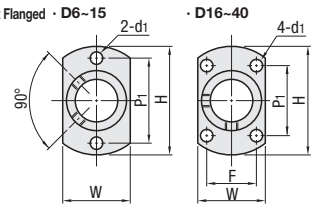
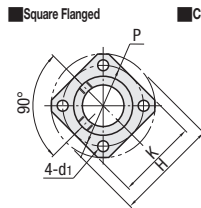
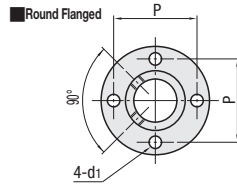
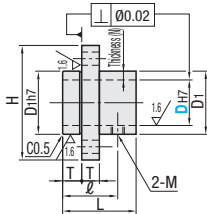


■ **Features:** Easy positioning during assembly.



Round Flanged	Square Flanged	Compact Flanged	Material	Surface Treatment
STHRB	STHSB	STHCB	General	Black Oxide
STHIR	STHIS	STHIC	Structural Steel	Electroless Nickel Plating
SSTHIR	SSTHIS	SSTHIC	SUS304	-

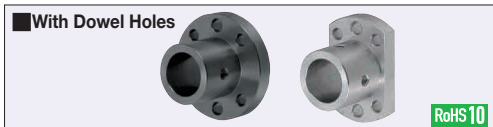
☞ See Alterations section for inclusion of a Hex Socket Set Screw.



Part Number		Sleeve Thickness (N)	L	D1	H	T	l	M (Coarse)	P	K	W	P1	F	d1	Unit Price									
Type	DH7														Round Flanged		Square Flanged		Compact Flanged					
															STHRB	STHIR	SSTHR	STHSB	SSTHS	STHCB	STHIC	SSTHIC		
Round Flanged STHRB STHIR SSTHIR	6	+0.012 0	3	15	12	28	3.5	11	M3	20	22	12	20	3.5										
	8			18	14	30	5	14	M4			16		4.5										
	8M								M3					3.5										
	10	+0.015 0	2	20	14	30		15	M4	22	23	18	22	4.5										
	10M								M4					4.5										
	12	+0.018 0		24	16	36	18			26	28	20	26											
	15			2.5	30	20	40	6	21	M4	30	32	24	30	4.5									
	16			3	32	22	42	6	22		32	33	26	28	16									
	20	+0.021 0	4	32	28	50	8	24	M5	39	39	32	31	22	5.5									
	25			4	38	33	55	8	27		44	44	37	36	24									
	30			4	38	38	66	10	29		52	52	42	41	27	6.6								
	40	+0.025 0	10	50	60	90	10	35	M6	75	75	65	65	38	9									

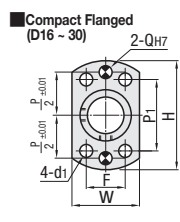
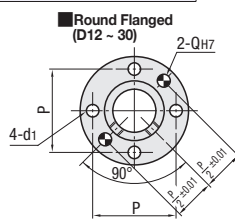
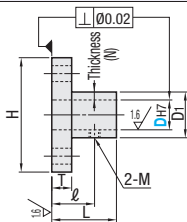


Part Number
STHIS20



Round Flanged	Compact Flanged	Material	Surface Treatment
STHRBK	STHCBK	S45C	Black Oxide
STHRK	STHCK	Equivalent	Electroless Nickel Plating
SSTHRK	SSTHCK	SUS304	-

☞ See Alterations section for inclusion of a Hex Socket Set Screw.



Part Number		Sleeve Thickness (N)	L	D1	H	T	l	M (Coarse)	P	W	P1	F	d1	Q	Unit Price							
Type	DH7														Round Flanged		Compact Flanged					
															STHRBK	STHRK	SSTHRK	STHCBK	STHCK	SSTHCK		
Round Flanged STHRBK STHRK SSTHRK	12	+0.018 0	2	24	16	36	6	15	M4	26	20	28	-	4								
	13			24	18	38	6	15		28	22	28										
	15		2.5	30	20	40	6	18		30	24	30										
	16		3	32	22	42	6	19		32	26	28	16									
	18		5	32	28	50	8	20		39	32	31	22									
	20	+0.021 0	4	32	28	50	8	20	M5	39	32	31	22	5.5								
	25			4	38	33	55	8	23		44	37	36	24								
	30			4	38	38	66	10	24	M6	52	42	41	27	6.6							

☞ Compact Flange Type is available only for D dimensions 16-30.

Ordering Example Part Number
SSTHCK20

Alterations Part Number - (MB)
STHR10 - MB
STHRL20 - MB

Alterations	Hex Socket Set Screw Included										
Code	MB										
Spec.	<p>Hex socket set screws come with as a set. Screw head may protrude from outer cylinder (D1). ☞ Included screws are SCM435 (Black Oxide) for Black Oxide and Black Anodized Products. ☞ Products other than above are SUS products. ☞ Long Sleeve Type comes with 4 set screws; others come with 2 set screws.</p> <table border="1"> <thead> <tr> <th>D</th> <th>M x Length</th> </tr> </thead> <tbody> <tr> <td>3, 4, 5, 6, 8, 10</td> <td>M3x3</td> </tr> <tr> <td>8M, 10M, 12, 13, 15, 16</td> <td>M4x3</td> </tr> <tr> <td>18, 20, 25</td> <td>M5x4</td> </tr> <tr> <td>30, 35, 40, 50</td> <td>M6x5</td> </tr> </tbody> </table>	D	M x Length	3, 4, 5, 6, 8, 10	M3x3	8M, 10M, 12, 13, 15, 16	M4x3	18, 20, 25	M5x4	30, 35, 40, 50	M6x5
D	M x Length										
3, 4, 5, 6, 8, 10	M3x3										
8M, 10M, 12, 13, 15, 16	M4x3										
18, 20, 25	M5x4										
30, 35, 40, 50	M6x5										