

SKY SERIES

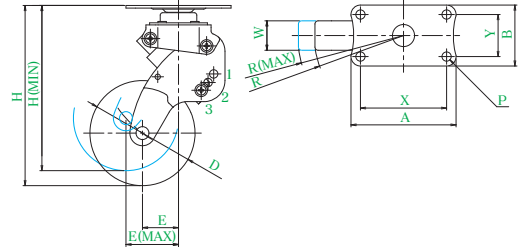
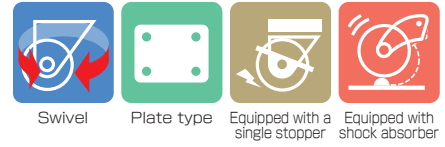
These casters are equipped with shock absorber and suitable for transporting precision equipment and parts. The built-in YUEI damper absorbs shock and vibration that are generated while traveling and prevents occurrence of noise.

- J
- PM
- J2
- RJ2
- SJ
- S
- E
- G
- L
- SA
- H
- CAL-H
- M
- PL
- Silence
- SUS-J2
- SUS-SJ
- SUS-S
- SUS-E
- SUS-H
- P
- SKY**
- Equipped with adjuster foot
- Special
- Easy lock
- Wheels

SKY-S TYPE



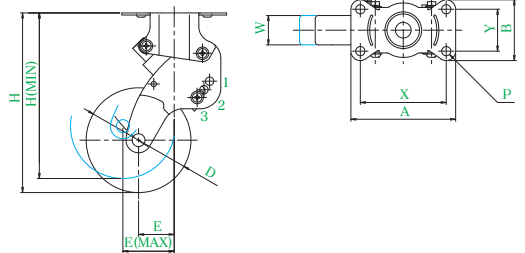
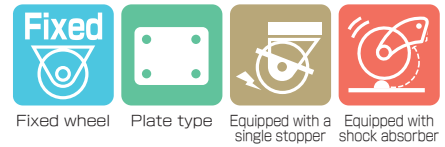
SKY-S100SUE-1



SKY-R TYPE



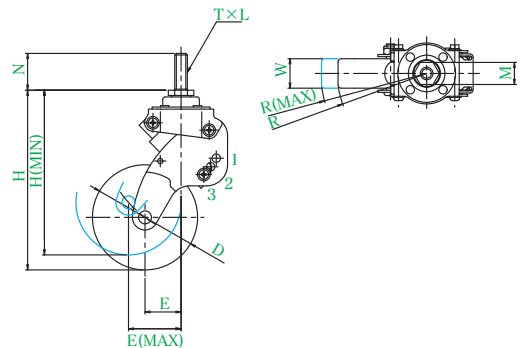
SKY-R100SUE-2



SKY-T TYPE



SKY-T100SUE-3, M16 x 40



Wheel in use

Refer to P165 for detailed specifications.



SUE

Urethane (including B) wheel with antistatic nylon wheel