

SUS-HSGTYPE



Swivel



Plate type



Double Bearing

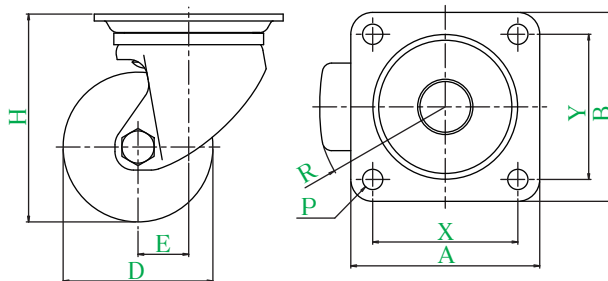
Double bearing



Stainless steel



SUS-HSG-65GFB



● Description of product number

SUS-HSG - 65 GFB

Bracket type

Wheel diameter

Wheel type

Bracket = Stainless steel

Product number	Wheels										
		Wheel diameter D(mm)	Wheel width W(mm)	Mounting height H(mm)	Mounting base A × B(mm)	Mounting dimensions X × Y(mm)	Hole diameter P(mm)	Eccentricity E(mm)	Turning radius R(mm)	Allowance load daN(kgf)	Wheel weight (g)
SUS-HSG-50	PB Phenol wheel (including B)	50	38	79	82 × 82	63 × 63	8.8	22	49	250(255.0)	720
	GFB Reinforced nylon wheel (including B)									250(255.0)	670
	MC MC nylon wheel (including B)									250(255.0)	710
	MCE MC nylon wheel (including B) (conductive)									250(255.0)	
SUS-HSG-65	PB Phenol wheel (including B)	65	38	90	82 × 82	63 × 63	8.8	22	56	250(255.0)	805
	GNB Reinforced nylon wheel (including B)									250(255.0)	770
	MC MC nylon wheel (including B)									250(255.0)	780
	MCEB MC nylon wheel (including B) (conductive)									250(255.0)	
SUS-HSG-75	PB Phenol wheel (including B)	75	38	100	82 × 82	63 × 63	8.8	22	61	250(255.0)	870
	GNB Reinforced nylon wheel (including B)									250(255.0)	815
	MC MC nylon wheel (including B)									250(255.0)	840
	MCEB MC nylon wheel (including B) (conductive)									250(255.0)	

Wheel in use

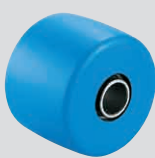
Refer to P164 for detailed specifications.



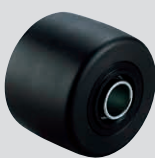
PB
Phenol wheel (including B)



GFB | GNB
Reinforced nylon wheel (including B)



MC
MC nylon wheel (including B)



MCE | MCEB
MC nylon wheel (including B) (conductive)