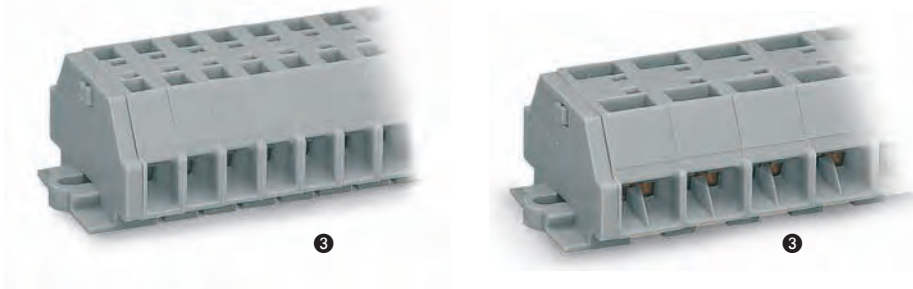


Terminal Strips with Fixing Flanges or Snap-in Mounting Feet 2.5 mm² 261 Series

0.08 ... 2.5 mm ² 500 V/6 kV/3 ① I _N 24 A	AWG 28 ... 14 300 V, 15 A ② 300 V, 20 A ③	0.08 ... 2.5 mm ² 500 V/6 kV/3 ① I _N 24 A	AWG 28 ... 14 300 V, 15 A ② 300 V, 20 A ③
Pole width 6 mm / 0.236 in. 8 ... 9 mm / 0.33 in. ②		Pole width 10 mm / 0.394 in. 8 ... 9 mm / 0.33 in. ②	



- ① 500 V = rated voltage
6 kV = rated surge voltage
3 = pollution degree
(also see Section 14)
- ② Strip length, see packaging or instructions.
- ③ Terminal blocks with blue insulation are suitable for Ex i applications
Item no. suffix .../000-006
- ④ For longer strips and/or assemblies of different colors, please contact factory

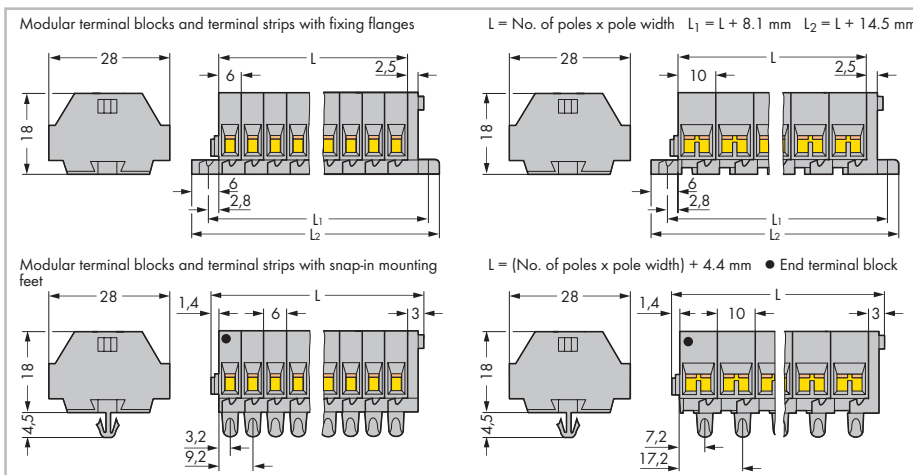
Pole No.	Item No.	Pack. Unit	Pole No.	Item No.	Pack. Unit
2-conductor terminal strip with fixing flanges, gray			4-conductor terminal strip with fixing flanges, gray		
2	261-102	100	2	261-202	100
3	261-103	100	3	261-203	100
4	261-104	100	4	261-204	100
5	261-105	200	5	261-205	100
6	261-106	50	6	261-206	50
7	261-107	50	7	261-207	50
8	261-108	50	8	261-208	50
9	261-109	50	9	261-209	50
10	261-110	25	10	261-210	25
11	261-111	25	11	261-211	25
12 ④	261-112	25	12 ④	261-212	25
2-conductor terminal strip with snap-in mounting feet, gray			4-conductor terminal strip with snap-in mounting feet, gray		
2	261-152	100	2	261-252	100
3	261-153	100	3	261-253	100
4	261-154	100	4	261-254	100
5	261-155	100	5	261-255	100
6	261-156	50	6	261-256	50
7	261-157	50	7	261-257	50
8	261-158	50	8	261-258	50
9	261-159	50	9	261-259	50
10	261-160	25	10	261-260	25
11	261-161	25	11	261-261	25
12 ④	261-162	25	12 ④	261-262	25



Terminal strip with fixing flanges, for screw or similar mounting types, fixing hole 3.2 mm Ø (with 209-123 mounting adapter also for DIN 35 rail)



Terminal strip with snap-in mounting feet, for plate thickness 0.6 mm ... 1.2 mm, fixing hole 3.5 mm Ø (fits 210-154 aluminum rail or with 209-120 mounting adapter for DIN 35 rail)



Dimensions in mm

Certification organizations can be found in the overview on page 622.