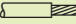
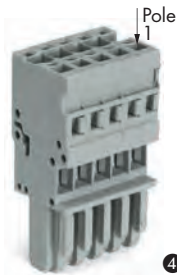
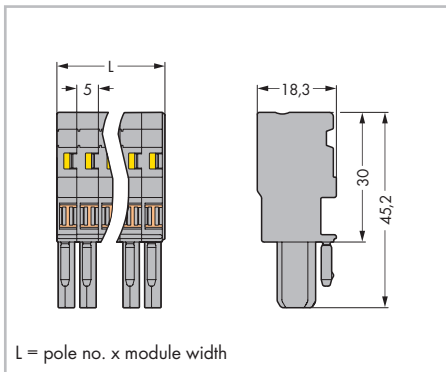


0.08 ... 4 mm² AWG 28 ... 12
 500 V/6 kV/3 ① 300 V, 20 A^{II}
 I_N 32 A ② 300 V, 20 A^{III}
 Module width 5 mm / 0.197 in.
 8 ... 9 mm / 0.33 in. ③



- ① 500 V = rated voltage
6 kV = rated surge voltage
3 = pollution degree
(also see Section 14)
- ② See current-carrying capacity curve, page 360 and at www.wago.com
- ③ Strip length, see packaging or instructions.
- ④ Item-no. suffix
blue .../000-006
green-yellow .../000-016
- ⑤ **Application examples for 1-pole female plug:**
 - Phase selection in three-phase network
 - Test plug with rated current capability
 - Simplified circuit expansion - addition of base circuits requires only female plugs to be plugged in
- ⑥ See page 359

Pole No.	Item No.	Pack. Unit	Accessories
1-conductor female plug , for insertion into carrier terminal blocks or male connectors, with coding fingers, gray, commoning possible with miniature adjacent jumpers			Appropriate marking system: Miniature WSB (see Section 13)
○ 1	769-101 ⑤	200	Insulation stop , 5 pcs/strip, 0.08 ... 0.2 mm ² "s" (0.14 mm ² "f-st") white 769-470 200 (8x25)
○ 2	769-102	100	Operating lever , loose, for female plugs and male connectors with CAGE CLAMP® 769-434 2000 (20x100)
○ 3	769-103	50	
○ 4	769-104	50	Locking lever , female plugs with 1-pole gray 769-428 100 (4x25) orange 769-429 100 (4x25)
○ 5	769-105	50	
○ 6	769-106	25	Locking lever , female plugs with 2-poles or more orange 769-431 100 (4x25) gray 769-430 100 (4x25)
○ 7	769-107	25	
○ 8	769-108	25	Strain relief plate , gray 1-pole 769-410 100 (4x25) 2- ... 3-pole 769-411 100 (4x25) 4- ... 5-pole 769-412 100 (4x25)
○ 9	769-109	25	
○ 10	769-110	25	Strain relief plate , gray 6- ... 9-pole 769-413 100 (4x25) 10- ... 15-pole 769-414 100 (4x25)
○ 11	769-111	20	
○ 12	769-112	20	Miniature adjacent jumper , insulated, I _N 24 A gray 769-402 100 (4x25)
○ 13	769-113	10	Jumper cover , for 1-conductor female plugs, for 5 poles gray 769-436 100 (4x25)
○ 14	769-114	10	
○ 15	769-115	10	Protective warning marker , with high-voltage symbol, black, for 5 terminal blocks yellow 280-415 100 (4x25)
			Snap-on type relief housing , ⑥ consisting of strain relief support/housing 5-pole 769-1605 25
			Miniature WSB Quick marking system , 10 strips with 10 markers per card, 5 mm wide markers plain 248-501 5
			Miniature WSB Quick marking system , plain, 10 strips with 10 markers per card, 5 mm wide markers yellow 248-501/000-002 red 248-501/000-005 blue 248-501/000-006 gray 248-501/000-007 orange 248-501/000-012 light green 248-501/000-017 green 248-501/000-023 violet 248-501/000-024
			5



Dimensions in mm