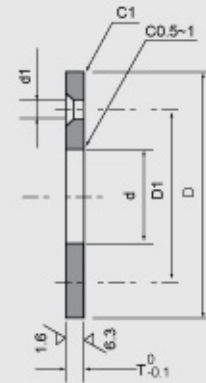


JTW止推垫片标准尺寸

JTW THRUST WASHER



d	D	T	D1±0.20	d1	螺钉	孔数
10.2	30	3	20	3.5	M3	2
12.2	40		28			
13.2						
14.2						
15.2	50	5	35	6	M5	
16.2						
18.2						
20.2						
25.2	55	7	40	7	M6	
30.2	60		45			
35.2	70		50			
40.2	80	8	60	9	M8	4
45.2	90		70			
50.3	100		75			
55.3	110		85			
60.3	120	10	90	11	M10	
65.3	125		95			
70.3	130		100			
75.3	140		110			
80.3	150	10	120	11	M10	
90.5	170		140			
100.5	190		160			
120.5	200		175			