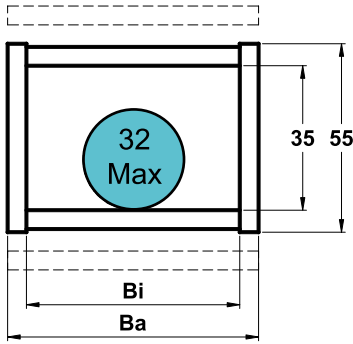


# 35不封闭系列-双面可打开 Non-closed series-both sides can be opened

## 主要技术参数 Basic technical data



内高Inner height (mm):	35
最大允许电缆外径(mm):	32
Max outer diameter of cable	
节距T Pitch (mm):	56 (每米18节) (18 segments/m)
最大水平悬空长度 (m):	2.4
Max horizontal hanging length	
最大允许行程	140
Max travel distance (m):	
最大允许垂直悬挂	50
Max vertical hanging (m):	
可选弯曲半径R(mm):	75、100、125、150、200、250、300
Optional bending radius	



### 应用场合Application:

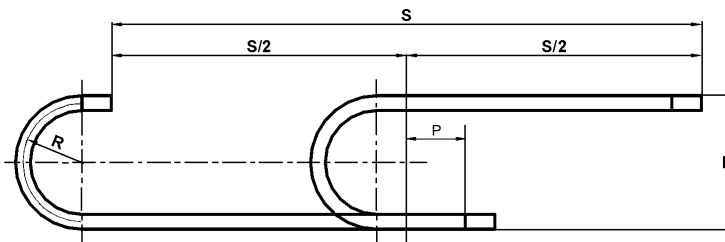
可应用于负载较重，长距离，高速运动，环境恶劣等场合。

Applied in the condition of heavy load, long distance, top speed movement, bad environment etc.

拖链型号 Type	内宽 Inner width Bi(mm)	外宽 outer width Ba(mm)	对应固定接头型号 Type of according fixed connector	A(mm)	B(mm)	C(mm)	ΦD(mm)
35.50.R	50	74	35.50.12PZ	65	22.5	22	5.5
35.75.R	75	99	35.75.12PZ	90	22.5	22	5.5
35.100.R	100	124	35.100.12PZ	115	22.5	22	5.5
35.125.R	125	149	35.125.12PZ	140	22.5	22	5.5
35.150.R	150	174	35.150.12PZ	165	22.5	22	5.5
35.175.R	175	199	35.175.12PZ	190	22.5	22	5.5
35.200.R	200	224	35.200.12PZ	215	22.5	22	5.5
35.250.R	250	274	35.250.12PZ	265	22.5	22	5.5

### 安装示意图Delineation of Installation

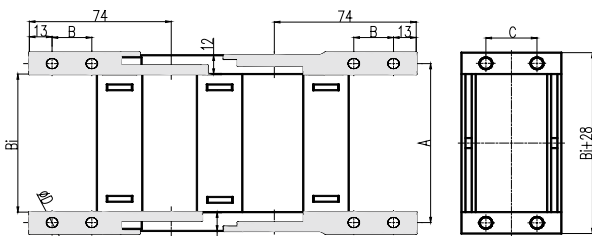
\*\*：订购时，必须从可选弯曲半径R中选择合适的、确切的数值  
The detailed value of R must be chosen from the dimensions



拖链长度 $L=S/2 + \pi R+K$ (安装余量)

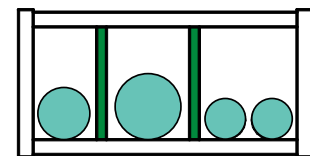
Length of chains:  $L=S/2 + \pi R+K$ (spare space)

$K=P+(2\sim 3)T$



拖链示意图

Delineation of cable chain



分隔片  
Separator

可选附件 Optional Accessories:

隔片Separator: 35.01VS