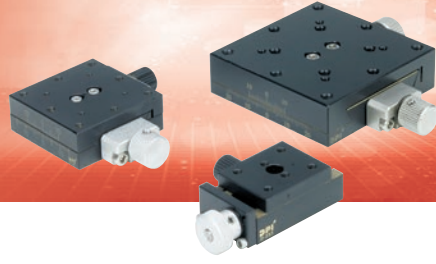


Manual Stage / Aluminum

XY-Dovetail Screw Stage



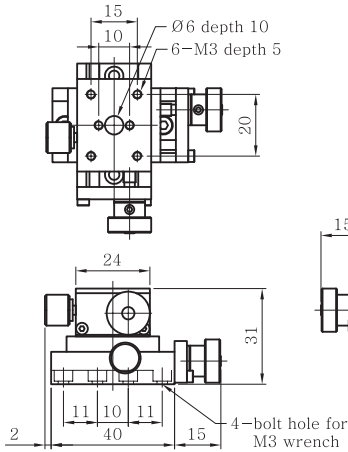
Spec

※ This drawing could be changed in order to improve the product without any notice.

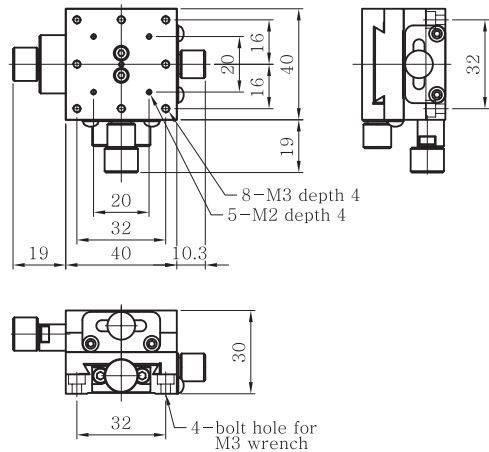
Model No	D2-253	D2-40	D2-60
Knob Position	Center		
Stage Surface (mm)	25×30	40×40	60×60
Stroke (mm)	±5	±7	±9
Resolution (mm)	0.35 / 1 division		
Parallelism (mm)	0.05	0.06	0.05
Straightness (mm)	0.03		
Travel Guide	Surface to Surface / Lead Screw		
Material	Brass / Raydent		
Load Capacity (kg/f)	0.8	1.5	2.3
Weight (kg)	0.24	0.38	0.96

DOVETAIL STAGE

D2-253



D2-40



D2-60

