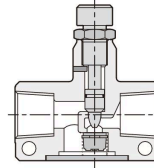


Speed controller series - ASC-150, BSC-300, CSC-400

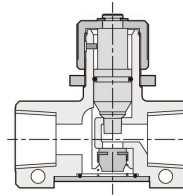
Specification and Flow controller

CHELIC PNEUMATIC

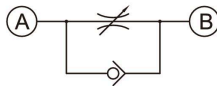
Internal structure



ASC - 150 series
BSC - 300 series



CSC - 400 series

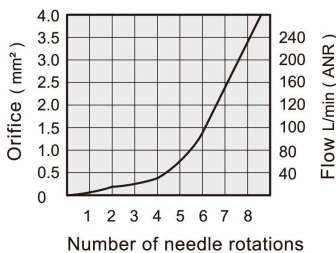


Specification

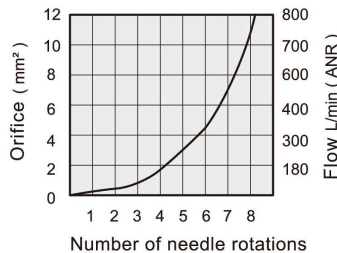
Item	Model	ASC-150-01(N)	ASC-150-02(N)	BSC-300-02(N)	BSC-300-03(N)	CSC-400-03	CSC-400-04
Fluid		Air					
Connection port	Rc (PT)	1/8"	1/4"	1/4"	3/8"	3/8"	1/2"
Pressure range	kgf/cm ² (kpa)	0.5 ~ 9 (50 ~ 900)					
Max. service pressure	kgf/cm ² (kpa)	9.5 (950)					
Flow	Controller side	240	240	800	800	1600	1600
	Free side	320	320	800	800	1600	1600
Suitable bore size	mm	Ø12, Ø16, Ø20, Ø25, Ø32		Ø32, Ø40, Ø50, Ø63		Ø50, Ø63, Ø80, Ø100	

Flow characteristics

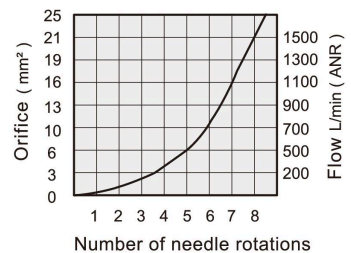
● ASC-150 (01,02)



● BSC-300 (02,03)



● CSC-400 (03,04)



SQ
Fitting

MSQ
Mini type
Fitting

SP
Plug
Nipple

SQ J
Nipple
Fitting

SQR
Check
Fitting

SQ G
Pressure
Gauge
Fitting

Brass
Fitting

SC
Speed
Controller

QS
Speed
Controller

QH
Hand
Valve

QV
Union
Straight

QST
Panel type
Speed
Controller

PU
Tube