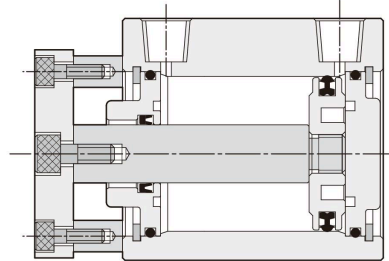
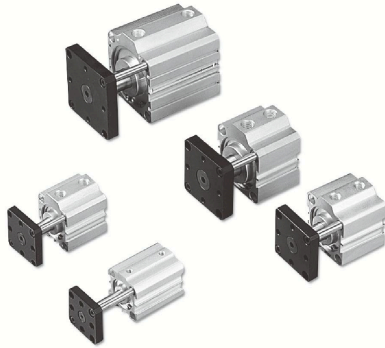


# JTD series - Twin-guide cylinder

Stroke table and Ordering expression

CHELIC PNEUMATIC

## Internal structure

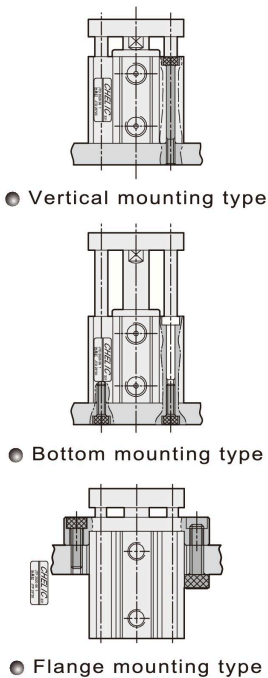


## Standard stroke

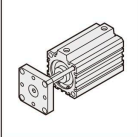
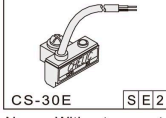
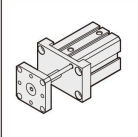
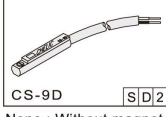
Bore size (mm)	Standard type ( Without magnet )									Standard type ( With magnet )							
	10	20	30	40	50	60	75	85	100	10	20	30	40	50	65	75	90
20	●	●	●	●	●	●	—	—	—	●	●	●	●	●	—	—	—
25	●	●	●	●	●	●	—	—	—	●	●	●	●	●	—	—	—
32	●	●	●	●	●	●	—	—	—	●	●	●	●	●	●	—	—
40	●	●	●	●	●	●	●	—	—	●	●	●	●	●	●	—	—
50	●	●	●	●	●	●	●	●	●	●	●	●	●	●	●	●	●
63	●	●	●	●	●	●	●	●	●	●	●	●	●	●	●	●	●

Note : Non-standard stroke is special made, calculate at the multiple of 10 and use the decimal system length inner processing treatment.

## Mounting type (Reference)



## How to order

<b>JTD</b>	—	<b>50</b>	×	<b>32</b>	—	<b>S E 2</b>
Model		Bore size		Stroke		Sensor switch
		20 - Ø20 mm 25 - Ø25 mm 32 - Ø32 mm 40 - Ø40 mm 50 - Ø50 mm 63 - Ø63 mm		Ø20 - 10 ~ 60 mm Ø25 - 10 ~ 60 mm Ø32 - 10 ~ 75 mm Ø40 - 10 ~ 75 mm Ø50 - 10 ~ 100 mm Ø63 - 10 ~ 100 mm		 CS-30E [S][E]2
<b>JTD :</b> Twin-guide cylinder						None : Without magnet [S] : With magnet [E] : Sensor switch code (CS-30E) [2] : Number of sensor switch 1 = 1 PCS 2 = 2 PCS
						 CS-9D [S][D]2
<b>JTF :</b> Twin-guide cylinder (Flange type)						None : Without magnet [S] : With magnet [D] : Sensor switch code (CS-9D) [B] : Sensor switch code (CS-9B) [2] : Number of sensor switch 1 = 1 PCS 2 = 2 PCS

⚠ Note

● S : With magnet mark " S "

**NA**  
Cartridge  
Cylinder

**NA2**  
Cartridge  
Cylinder

**NB**  
Cartridge  
Cylinder

**NU**  
Free Mount  
Cylinder

**ND**  
Free Mount  
Cylinder

**NQ**  
Free Mount  
Cylinder

**MSI**  
Mini  
Compact  
Cylinder

**JD**  
Compact  
Cylinder

**JG**  
Compact  
Cylinder

**JTD**  
Twin-Guide  
Cylinder

**JTF**  
Twin-Guide  
Cylinder

**JCB**  
Twin-Guide  
Cylinder

**JCF**  
Twin-Guide  
Cylinder

**JE**  
Compact  
Cylinder