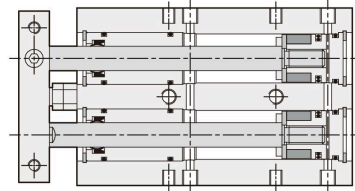
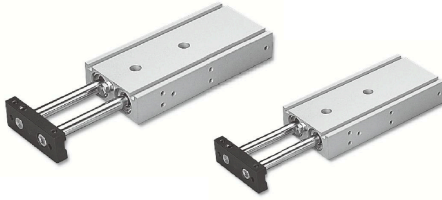


TDX series - Dual rod cylinder

Operating specification and Ordering expression

CHELIC PNEUMATIC

Internal structure



TD
Dual Rod
Cylinder

TDX
Dual Rod
Cylinder

TDXU
Dual Rod
Cylinder

STU
Dual Rod
Cylinder

STM
Dual Rod
Cylinder

STX
Dual Rod
Cylinder

Theoretical force

Unit : kgf

Bore size (mm)	Piston rod dia (mm)	Action	Piston area cm ²	Air pressure (kgf/cm ²)						
				1	2	3	4	5	6	7
10	6	Push	1.5	—	3.1	4.7	6.2	7.8	9.3	10.9
		Pull	1.0	—	2.0	3.0	4.0	5.0	6.0	7.0
16	8	Push	4.0	4.0	8.0	12.0	16.0	20.1	24.1	28.1
		Pull	3.0	3.0	6.0	9.0	12.0	15.0	18.0	21.0
20	10	Push	6.2	6.2	12.5	18.8	25.1	31.4	37.6	43.9
		Pull	4.7	4.7	9.4	14.1	18.8	23.5	28.2	32.9
25	12	Push	9.8	9.8	19.6	29.4	39.2	49.1	58.8	68.5
		Pull	7.5	7.5	15.1	22.6	30.2	37.7	45.3	52.8

Note : Above are theoretical data : please take into consideration the frictional resistance and the mechanical efficiency of value should be added calculation before using. (About 70%~80%)

Specification

Unit : mm

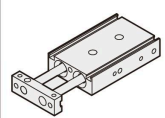

Model	Bore size	Ø10	Ø16	Ø20	Ø25
Operation		Double acting			
Fluid		Air			
Pressure range	kgf / cm ² (kpa)	1 ~ 8.5 (100 ~ 850)			
Max. service pressure	kgf / cm ² (kpa)	9 (900)			
Operating ambient temperature range	°C	0 ~ 60			
Range of service speed	mm/sec	50 ~ 700			
Stroke adjusting range		-5 ~ 0			
Port size		M5×0.8		Rc 1/8"	
Sensor device		With magnet			

Standard stroke

Unit : mm

Bore size	Stroke
Ø10	10、15、20、25、30、40、45、50、60、70、75、80、90、100
Ø16	10、15、20、25、30、40、45、50、60、70、75、80、90、100、125、150
Ø20	10、15、20、25、30、40、45、50、60、70、75、80、90、100、125、150
Ø25	10、15、20、25、30、40、45、50、60、70、75、80、90、100、125、150

How to order

TDX	16	×	50	—	ST	2
Model	Bore size		Stroke		Sensor switch	
	10 - Ø 10 mm 16 - Ø 16 mm 20 - Ø 20 mm 25 - Ø 25 mm		Ø10 - 10 ~ 100 mm Ø16 - 10 ~ 150 mm Ø20 - 10 ~ 150 mm Ø25 - 10 ~ 150 mm			
					CS-6T ST 2	

None : Without sensor switch

ST : Sensor switch code (CS-6T)

2 : Number of sensor switch
1 = 1 PCS
2 = 2 PCS