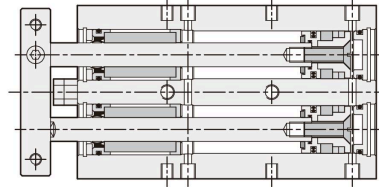
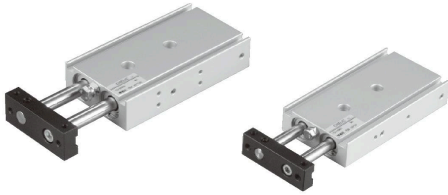


# TDXU series - Dual rod cylinder ( Linear bearing )

Operating specification and Ordering expression

CHELIC PNEUMATIC

## Internal structure



**TD**  
Dual Rod  
Cylinder

**TDX**  
Dual Rod  
Cylinder

**TDXU**  
Dual Rod  
Cylinder

**STU**  
Dual Rod  
Cylinder

**STM**  
Dual Rod  
Cylinder

**STX**  
Dual Rod  
Cylinder

## Theoretical force

Unit : kgf

Bore size (mm)	Piston rod dia (mm)	Action	Piston area cm <sup>2</sup>	Air pressure ( kgf/cm <sup>2</sup> )						
				1	2	3	4	5	6	7
16	8	Push	4.0	4.0	8.0	12.0	16.0	20.1	24.1	28.1
		Pull	3.0	3.0	6.0	9.0	12.0	15.0	18.0	21.0
20	10	Push	6.2	6.2	12.5	18.8	25.1	31.4	37.6	43.9
		Pull	4.7	4.7	9.4	14.1	18.8	23.5	28.2	32.9
25	12	Push	9.8	9.8	19.6	29.4	39.2	49.1	58.8	68.5
		Pull	7.5	7.5	15.1	22.6	30.2	37.7	45.3	52.8

Note : Above are theoretical data : please take into consideration the frictional resistance and the mechanical efficiency of value should be added calculation before using. ( About 70%~80% )

## Specification

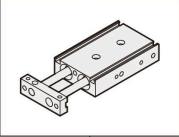
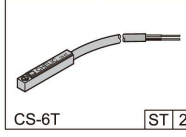
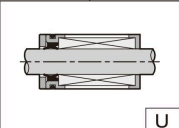
Item	Bore size (mm)	Ø16	Ø20	Ø25
Operation		Double acting		
Fluid		Air		
Pressure range	kgf / cm <sup>2</sup> (kpa)	1 ~ 8.5 (100 ~ 850)		
Max. service pressure	kgf / cm <sup>2</sup> (kpa)	9 (900)		
Operating ambient temperature range	°C	0 ~ 60		
Range of service speed	mm/sec	50 ~ 700		
Stroke adjusting range		-5 ~ 0		
Port size		M5×0.8	Rc 1/8"	
Sensor device		With magnet		

## Standard stroke

Unit : mm

Bore size	Stroke
Ø16	10、15、20、25、30、40、45、50、60、70、75、80、90、100、125、150
Ø20	10、15、20、25、30、40、45、50、60、70、75、80、90、100、125、150
Ø25	10、15、20、25、30、40、45、50、60、70、75、80、90、100、125、150

## How to order

<b>TDXU</b>	<b>16</b>	×	<b>50</b>	-	<b>ST</b>	<b>2</b>
Model	Bore size		Stroke		Sensor switch	
	16 - Ø16 mm 20 - Ø20 mm 25 - Ø25 mm		Ø16 - 10~150 Ø20 - 10~150 Ø25 - 10~150			
					CS-6T <span style="border: 1px solid black; padding: 0 2px;">ST</span> <span style="border: 1px solid black; padding: 0 2px;">2</span>	

None : Without sensor switch

ST : Sensor switch code (CS-6T)

2 : Number of sensor switch

1 = 1 PCS

2 = 2 PCS

U: Linear bearing guide