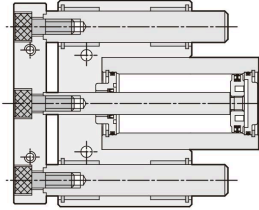
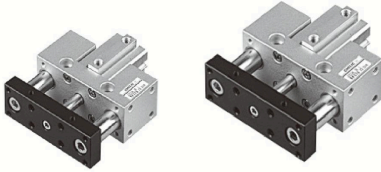


JCB series - Twin-guide cylinder (Side mounting type)

Stroke table and Ordering expression

CHELIC PNEUMATIC

Internal structure



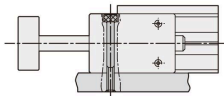
Standard stroke

Bore size (mm)	Standard type (Without magnet)											Standard type (With magnet)									
	10	20	30	40	50	60	75	85	100	125	150	10	20	30	40	50	65	75	90	115	140
12	●	●	●	●	●	—	—	—	—	—	—	●	●	●	●	—	—	—	—	—	—
16	●	●	●	●	●	—	—	—	—	—	—	●	●	●	●	—	—	—	—	—	—
20	●	●	●	●	●	●	●	●	●	—	—	●	●	●	●	●	●	●	●	—	—
25	●	●	●	●	●	●	●	●	●	—	—	●	●	●	●	●	●	●	●	—	—
32	●	●	●	●	●	●	●	●	●	—	—	●	●	●	●	●	●	●	●	—	—
40	●	●	●	●	●	●	●	●	●	●	●	●	●	●	●	●	●	●	●	●	●
50	●	●	●	●	●	●	●	●	●	●	●	●	●	●	●	●	●	●	●	●	●
63	●	●	●	●	●	●	●	●	●	●	●	●	●	●	●	●	●	●	●	●	●

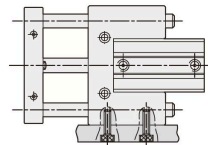
Note : Non-standard stroke is custom, calculate at the multiple of 10 and use the decimal system length inner processing treatment.

Mounting type (Reference)

● Upper mounting type
(JCB-Side mounting type)



● Side mounting type
(JCB-Side mounting type)



How to order

<div style="border: 1px solid black; border-radius: 15px; padding: 5px; width: 60px; margin: 0 auto;">JCB</div> <div style="border: 1px solid black; padding: 2px; margin: 5px auto; width: 60px;">Model</div> <div style="border: 1px solid black; padding: 5px; margin: 5px auto; width: 60px;"> </div> <div style="font-size: 8px; margin-top: 5px;"> JCB : Twin-guide cylinder (Side mounting type) </div> <div style="border: 1px solid black; padding: 5px; margin: 5px auto; width: 60px;"> </div> <div style="font-size: 8px; margin-top: 5px;"> JCBD : Twin-guide cylinder (Side mounting type) </div>	—	<div style="border: 1px solid black; border-radius: 15px; padding: 5px; width: 60px; margin: 0 auto;">50</div> <div style="border: 1px solid black; padding: 2px; margin: 5px auto; width: 60px;">Bore size</div> <div style="border: 1px solid black; padding: 5px; margin: 5px auto; width: 60px;"> 12 - Ø12 mm 16 - Ø16 mm 20 - Ø20 mm 25 - Ø25 mm 32 - Ø32 mm 40 - Ø40 mm 50 - Ø50 mm 63 - Ø63 mm </div>	×	<div style="border: 1px solid black; border-radius: 15px; padding: 5px; width: 60px; margin: 0 auto;">32</div> <div style="border: 1px solid black; padding: 2px; margin: 5px auto; width: 60px;">Stroke</div> <div style="border: 1px solid black; padding: 5px; margin: 5px auto; width: 60px;"> Ø12 - 10 ~ 50 mm Ø16 - 10 ~ 50 mm Ø20 - 10 ~ 100 mm Ø25 - 10 ~ 100 mm Ø32 - 10 ~ 100 mm Ø40 - 10 ~ 150 mm Ø50 - 10 ~ 150 mm Ø63 - 10 ~ 150 mm </div>	—	<div style="border: 1px solid black; border-radius: 15px; padding: 5px; width: 60px; margin: 0 auto; display: flex; justify-content: space-around;"> SD2 </div> <div style="border: 1px solid black; padding: 2px; margin: 5px auto; width: 60px;">Sensor switch</div> <div style="border: 1px solid black; padding: 5px; margin: 5px auto; width: 60px;"> </div> <div style="font-size: 8px; margin-top: 5px;"> None : Without sensor switch S : With magnet D : Sensor switch code (CS-9D) B : Sensor switch code (CS-9B) 2 : Number of sensor switch 1 = 1 PCS 2 = 2 PCS </div>
---	---	---	---	--	---	---

⚠ Note

● S : With magnet marks " S "

NA
Cartridge
Cylinder

NA2
Cartridge
Cylinder

NB
Cartridge
Cylinder

NU
Free Mount
Cylinder

ND
Free Mount
Cylinder

NQ
Free Mount
Cylinder

MSI
Mini
Compact
Cylinder

JD
Compact
Cylinder

JG
Compact
Cylinder

JTD
Twin-Guide
Cylinder

JTF
Twin-Guide
Cylinder

JCB
Twin-Guide
Cylinder

JCF
Twin-Guide
Cylinder

JE
Compact
Cylinder