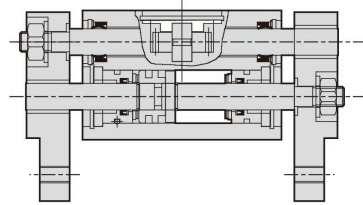
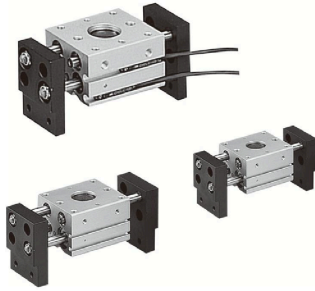


# HDT series - Gripper ( Double force )

Operation specification and Ordering expression

CHELIC PNEUMATIC

## Internal structure

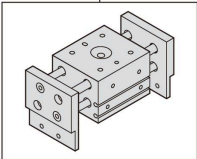
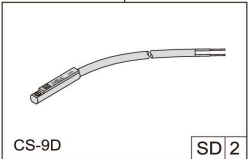
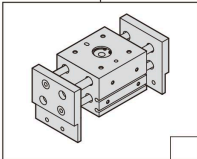


## Specification

Item	Model	HDT-10	HDT-16	HDT-20	HDT-25	HDT-32	HDT-40
Bore size		10	16	20	25	32	40
Type of operation		Double acting					
Fluid		Air					
Pressure range	kgf/cm <sup>2</sup> (kpa)	1.5 ~ 7 ( 150 ~ 700 )					
Range of service temperature	°C	0 ~ 60					
Max. operation frequency	min	40	40	40	40	20	20
Lubrication		Lubrication free					
Gripping force	kgf [ N ]	1.4 ( 14 )	4.5 ( 44 )	7.4 ( 73 )	13.1 ( 128 )	23.2 ( 228 )	40 ( 396 )
Max. Length of gripping point (L)	mm	40	60	80	90	100	100
Lever open/close stroke	mm	20,40,60	30,60,80	40,80,100	50,100,120	70,120,160	100,160,200
Port size	mm	M5 x 0.8P				Rc 1/8	
Magnet device		With magnet					

Note : L : Length of point , 10 、 16 、 20 、 25 = 40mm , 32 、 40 = 80mm , M : Theoretical gripping Torque , P : Pressure=5 Kgf/cm<sup>2</sup>

## How to order

<b>HDT</b>	<b>20</b>	×	<b>100</b>	—	<b>SD</b>	<b>2</b>	—	
Model	Bore size		Stroke		Sensor switch			Claw type
	10 - Ø 10 mm 16 - Ø 16 mm 20 - Ø 20 mm 25 - Ø 25 mm 32 - Ø 32 mm 40 - Ø 40 mm		Ø10 - 20 , 40 , 60 mm Ø16 - 30 , 60 , 80 mm Ø20 - 40 , 80 , 100 mm Ø25 - 50 , 100 , 120 mm Ø32 - 70 , 120 , 160 mm Ø40 - 100 , 160 , 200 mm			SD 2		

HDT : Gripper

None : Without sensor switch

None : Standard

**SD** : Sensor switch code (CS-9D)

**SB** : Sensor switch code (CS-9B)

**SH** : Sensor switch code (CS-9H)

**SDN** : Sensor switch code (CS-9DN)

**SDP** : Sensor switch code (CS-9DP)

**SG** : Sensor switch code (CS-8G)

**SGN** : Sensor switch code (CS-8GN)

**SGP** : Sensor switch code (CS-8GP)

**B** : Side tapped mounting

※ CS-9H use for voltage AC / DC 5 ~ 240V

**2** : Number of sensor switch

1 = 1 PCS

2 = 2 PCS