

桿端軸承 / ROD END BEARING

NHS Series

鐵氟龍耐磨型

採用超耐磨襯套材料 (PTFE)，免給油耐磨設計，精密無間隙，必須微調間距之場所最合適。

材質

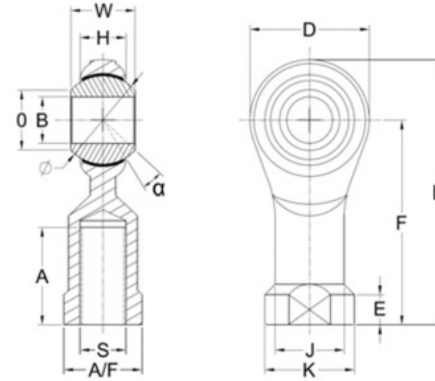
- 主體：中碳鋼S45C，鍛造，表面鍍鋅 (Cr3+)。
- 鋼珠：鉻鉬軸承鋼SUJ-2，熱處理 HRC 56^{±2}，鍍硬鉻。
- 襯墊：鐵氟龍銅網 (PTFE)-柔軟堅韌銅網和氟樹脂塗佈組成。

SELF-LUBRICATING TYPE

Highly wear-resisting PTFE liner. Well made with low clearance. Suitable for precision applications.

MATERIALS

- **BODY**: Medium Carbon Steel S45C, Forged, Zinc Coated (Cr3+)
- **BALL**: Bearing Steel SUJ-2, Heat Treated HRC56^{±2}, Hard Chrome Plated
- **LINER**: PTFE, Strong & flexible bronze mesh spread with fluorine resin



■ 間隙 (mm)

徑向間隙值：小於0.035
軸向間隙值：小於0.05

■ Clearance (Unit: mm)

Radial Clearance: 0.035 or less
Axial Clearance: 0.05 or less

公制尺寸 / DIMENSIONS IN METRIC mm

型號 Model No.	B H7	W +0 -0.1	D	L	O	H +0.1 -0.4	A +2 -0	F	J	K	E	A/F +0 -0.3	Thread S	旋角 α	球徑 Ball Dia. Ø	徑向荷重 Radial S. load (kgf)	重量 Weight (g)
NHS 3 R/L	3	6	14	28.5	7.4	4	10	21.5	6.5	8	3	7	3x0.5	13	9.30	180	8
NHS 4 R/L	4	7	14	31.5	7.6	4.2	12	24.5	8	9.5	4	8	4x0.7	13	10.32	220	11
NHS 5 R/L	5	8	17	36.5	7.7	5.2	12	28	9	11	4	9	5x0.8	13	11.11	390	16
NHS 6 R/L	6	9	19	39	8.9	6	14	29.5	10	13	5	11	6x1.0	13	12.70	500	24
NHS 8 RF/LF NHS 8 R/L	8	12	23.5	47.5	10.4	8	17	36	13	16	5	14	8x1.0 8x1.25	13	15.88	740	41
NHS 10 RF/LF NHS 10 R/L	10	14	27	58	12.9	10.5	21	44.5	15	19	7	17	10x1.25 10x1.5	13	19.05	940	70
NHS 12 RF/LF NHS 12 R/L	12	16	32	65	15.4	11.5	24	49	18	22	7	19	12x1.25 12x1.75	13	22.23	1100	105
NHS 14 RF/LF NHS 14 R/L	14	19	36	75	16.8	13.5	27	57	20	25	8	21	14x1.5 14x2.0	15	25.40	1520	150
NHS 16 RF/LF NHS 16 R/L	16	21	39	84	19.3	13.8	33	64.5	22	27	8	22	16x1.5 16x2.0	15	28.58	2020	180
NHS 18 R/L	18	23	43	91.5	21.8	15	36	70	25	31	10	27	18x1.5	15	31.75	2520	255
NHS 20 R/L	20	25	47	100	24.3	16.8	40	76.5	28	34	10	30	20x1.5	15	34.93	2780	340
NHS 22 R/L	22	28	50	108	25.9	18.2	43	83	30	37	12	32	22x1.5	15	38.10	3590	420
NHS 25 R/L	25	31	56	120	29.6	21	48	92	34	42	12	36	24x2.0	15	42.85	5430	590
NHS 30 R/L	30	37	68	145	34.8	23.6	58	111	40	50	15	41	30x2.0	15	50.80	6910	950

英制尺寸 / DIMENSIONS IN INCHES *±0.02~0.04 inches

型號 Model No.	B H7	W +0 -0.004	D	L	O	H +0.004 -0.016	A +0.08 -0	F	J	K	E	A/F +0 -0.012	Thread S	旋角 α	球徑 Ball Dia. Ø	徑向荷重 Radial S. load (Lbs)	重量 Weight (Lbs)
NHS 3/16 R/L	0.1875	0.312	0.669	1.437	0.303	0.205	0.472	1.102	0.354	0.433	0.157	0.354	UNF 3/16-32	13	0.437	860	0.04
NHS 1/4 R/L	0.2500	0.375	0.748	1.535	0.350	0.236	0.551	1.161	0.394	0.512	0.197	0.433	UNF 1/4-28	13	0.500	1100	0.05
NHS 5/16 R/L	0.3125	0.437	0.925	1.870	0.409	0.315	0.669	1.417	0.512	0.630	0.197	0.551	UNF 5/16-24	13	0.625	1630	0.09
NHS 3/8 R/L	0.3750	0.500	1.063	2.283	0.508	0.413	0.827	1.752	0.591	0.748	0.276	0.669	UNF 3/8-24	13	0.750	2070	0.15
NHS 7/16 R/L	0.4375	0.500	1.063	2.283	0.508	0.413	0.827	1.752	0.591	0.748	0.276	0.669	UNF 7/16-20	13	0.750	2070	0.15
NHS 1/2 R/L	0.5000	0.625	1.260	2.559	0.606	0.453	0.945	1.929	0.709	0.866	0.276	0.748	UNF 1/2-20	13	0.875	2430	0.23
NHS 5/8 R/L	0.6250	0.750	1.535	3.307	0.760	0.543	1.299	2.539	0.866	1.063	0.315	0.866	UNF 5/8-18	15	1.125	4450	0.40
NHS 3/4 R/L	0.7500	0.875	1.693	3.602	0.858	0.591	1.417	2.756	0.984	1.220	0.394	1.063	UNF 3/4-16	15	1.250	6130	0.56