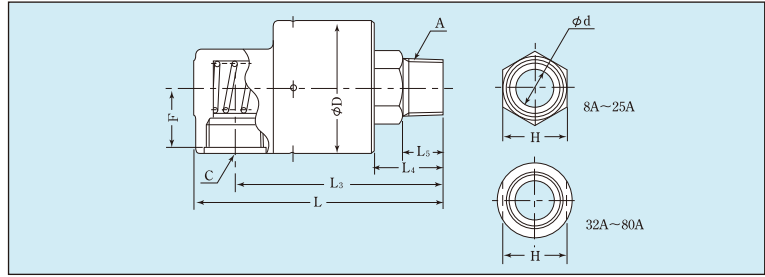
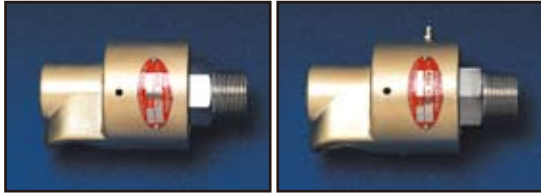


# RXE1000 RXH1000 (Simplex, Thread Connection)



NOMINAL SIZE	CODE	A: SIZE OF ROTOR THREAD	C	F	D	L	L3	L4	L5	d	H
8A	1008	R1/4	Rc1/4	18	39	81	70	22	14	6	17
10A	1010	R3/8	Rc3/8	21	46	90	77	23	14	9	19
	1110	G3/8	Rc3/8	21	46	93	80	26	15	9	22
	1210	M16×1.5	Rc3/8	21	46	93	80	26	15	9	22
	1610	NPT3/8	NPT3/8	21	46	90	77	23	14	9	19
	1710	5/8-18UNF	NPT3/8	21	46	93	80	26	15	9	22
15A	1015	R1/2	Rc1/2	24	53	108	91	28	18	12.5	22
	1115	G1/2	Rc1/2	24	53	110	93	30	18	12.5	27
	1215	M22×1.5	Rc1/2	24	53	110	93	30	18	12.5	27
	1615	NPT1/2	NPT1/2	24	53	108	91	28	18	12.5	22
	1715	3/4-16UNF	NPT1/2	24	53	110	93	30	18	12.5	27
20A	1020	R3/4	Rc3/4	29	65	120	101	32	19	18	32
	1120	G3/4	Rc3/4	29	65	120	101	32	17	18	32
	1220	M26×1.5	Rc3/4	29	65	120	101	32	17	18	32
	1620	NPT3/4	NPT3/4	29	65	120	101	32	19	18	32
	1720	1-14UNS	NPT3/4	29	65	120	101	32	17	18	32
25A	1025	R1	Rc1	31	72	135	112	37	22	22	36
	1125	G1	Rc1	31	72	131	108	33	18	22	36
	1225	M35×1.5	Rc1	31	72	132	109	34	16	22	41
	1625	NPT1	NPT1	31	72	135	112	37	22	22	36
	1725	1 1/2-12UNF	NPT1	31	72	139	116	41	23	22	41
32A	1032	R1 1/4	Rc1 1/4	41	83	161	134	45	25	30	41
	1132	G1 1/4	Rc1 1/4	41	83	162	135	46	25	30	41
	1232	M42×1.5	Rc1 1/4	41	83	162	135	46	25	30	41
	1632	NPT1 1/4	NPT1 1/4	41	83	161	134	45	25	30	41
	1732	1 3/4-12UN	NPT1 1/4	41	83	162	135	46	25	30	41
40A	1040	R1 1/2	Rc1 1/2	44	89	171	141	47	25	35	46
	1140	G1 1/2	Rc1 1/2	44	89	172	142	48	25	35	46
	1240	M50×1.5	Rc1 1/2	44	89	172	142	48	25	35	46
	1640	NPT1 1/2	NPT1 1/2	44	89	171	141	47	25	35	46
	1740	2-12UN	NPT1 1/2	44	89	172	142	48	25	35	46
50A	1050	R2	Rc2	57	115	206	168	56	30	48	60
	1650	NPT2	NPT2	57	115	206	168	56	30	48	60
65A	1065	R2 1/2	Rc2 1/2	73	123	257	210	75	40	58	65
	1665	NPT2 1/2	NPT2 1/2	73	123	257	210	75	40	58	65
80A	1080	R3	Rc3	80	138	279	224	75	40	68	75
	1680	NPT3	NPT3	80	138	279	224	75	40	68	75

- \* Model code "1008" is only available with type "RXE", not type "RXH".
- \* A rotor with a parallel screw is supplied with the copper plate gasket.
- \* Contact us or representatives when a port for temperature or pressure sensor is required.

RXC & RXM are the same as RXE & RXH respectively but Casing and Elbow (connection for hose) threads are NPT.  
 RXC: Suitable for cooling service. Lubrication free due to pre-greased ball bearings  
 RXM: Available for high temperature operation with high grade seal materials and providing grease nipple for lubrication  
 Code No.16\*\*&17\*\* are not available for RXC & RXM.  
 Code No.1008 is not available for RXC & RXM.