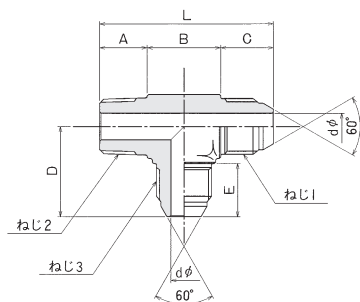


- Material : Plated steel
- 材質 : SS(三価クロメートメッキ)

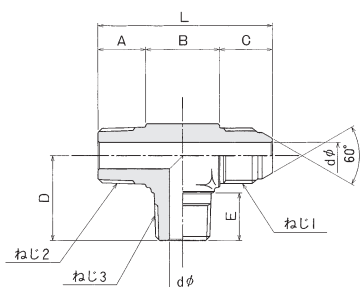
## Tタイプアダプター

### T-G2-R-G2



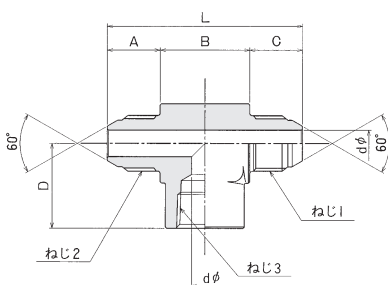
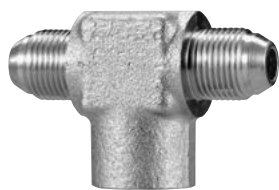
呼び径	ねじT <sub>1</sub>	ねじT <sub>2</sub>	ねじT <sub>3</sub>	Lmm	Amm	Bmm	Cmm	Dmm	Emm	dφmm
6	G ¼	R ¼	G ¼	49.0	13	20	16.0	26.0	16.0	5.5
9	G ⅜	R ⅜	G ⅜	58.5	15	26	17.5	30.5	17.5	7.0
12	G ½	R ½	G ½	62.0	18	28	20.0	34.0	20.0	10.0
19	G ¾	R ¾	G ¾	75.5	20	34	21.5	38.5	21.5	16.0
25	G 1	R 1	G 1	86.5	22	42	22.5	43.5	22.5	21.5

### T-G2-R-R



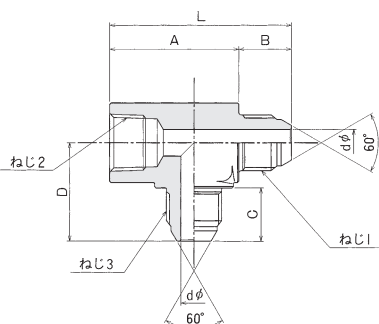
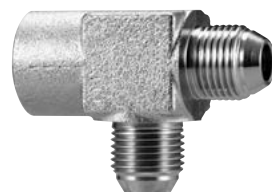
呼び径	ねじT <sub>1</sub>	ねじT <sub>2</sub>	ねじT <sub>3</sub>	Lmm	Amm	Bmm	Cmm	Dmm	Emm	dφmm
6	G ¼	R ¼	R ¼	49.0	13	20	16.0	23	13	5.5
9	G ⅜	R ⅜	R ⅜	58.5	15	26	17.5	28	15	7.0
12	G ½	R ½	R ½	62.0	18	28	20.0	32	18	10.0
19	G ¾	R ¾	R ¾	75.5	20	34	21.5	37	20	16.0
25	G 1	R 1	R 1	86.5	22	42	22.5	43	22	21.5

### T-G2-G2-Rc



呼び径	ねじT <sub>1</sub>	ねじT <sub>2</sub>	ねじT <sub>3</sub>	Lmm	Amm	Bmm	Cmm	Dmm	dφmm
6	G ¼	G ¼	Rc ¼	56	16.0	24	16.0	23	5.5
9	G ⅜	G ⅜	Rc ⅜	63	17.5	28	17.5	28	7.0
12	G ½	G ½	Rc ½	74	20.0	34	20.0	32	10.0
19	G ¾	G ¾	Rc ¾	85	21.5	42	21.5	40	16.0

### T-G2-Rc-G2



呼び径	ねじT <sub>1</sub>	ねじT <sub>2</sub>	ねじT <sub>3</sub>	Lmm	Amm	Bmm	Cmm	Dmm	dφmm
6	G ¼	Rc ¼	G ¼	51.0	35	16.0	16.0	25	5.5
9	G ⅜	Rc ⅜	G ⅜	59.5	42	17.5	17.5	29	7.0
12	G ½	Rc ½	G ½	69.0	49	20.0	20.0	35	10.0
19	G ¾	Rc ¾	G ¾	82.5	61	21.5	21.5	41	16.0

(注意) 予告なしに、品質・性能・改善のため寸法を変更する事があります。