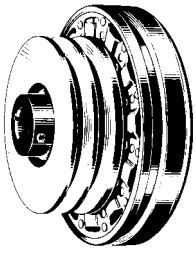
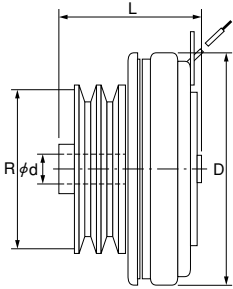
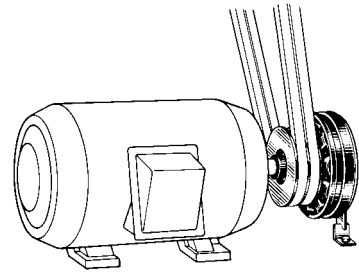


Electro-Sheave Clutch Units with V Pulley, ES Series

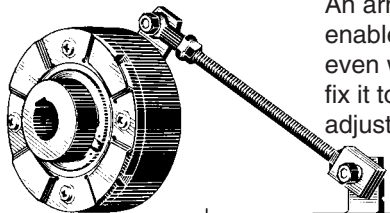


Integrated Warner clutch-V pulley units. Only a wrench is required to install an ES on any machine. No designing, machining, or centering is required.

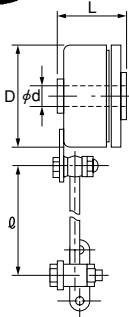
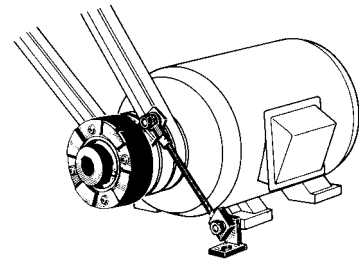


Model	Static friction torque (kgm)	Rated voltage (DC-V)	Power consumption at 75°C (W)	Outside dimensions (mm)				Weight (kg)
				D	L	ϕd	R	
ES 500-A2-19	7	24	23	135	155	19	100	6.3
ES 500-B2-24	7	24	23	135	155	24	150	8.5
ES 825-B2-28	20	24	28	218	135	28	150	17
ES 825-B4-32	20	24	28	218	170	32	150	23
ES 1000-B4-32	35	24	31	262	192	32	200	35
ES 1225-C3-42	65	24	27	322.5	248	42	236	51

Brake Units with Holding Arm, Series AR

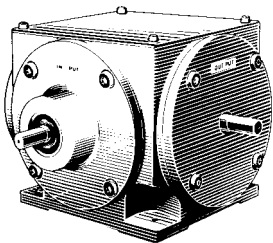


An arm and a rod are provided to enable the unit to be installed easily even where no frame is available to fix it to. Just key the rotary shaft. No adjustment is required.

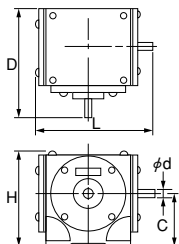
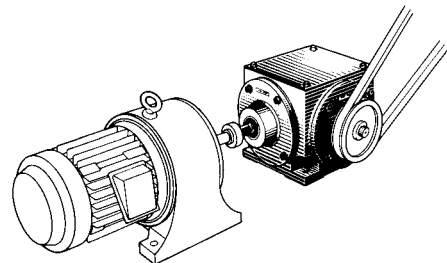


Model	Static friction torque (kgm)	Rated voltage (DC-V)	Power consumption at 75°C (W)	Outside dimensions (mm)				Weight (kg)
				D	L	ϕd	R	
AR 250	0.7	24	7	67	47	12	124	0.78
AR 400	2.8	24	8	108	60	18	192	2.1
AR 500	7	24	23	136	93.3	28	265	5.5
AR 825	18	24	25	218	107	30	295	13

Rever-Pack Reversible Drive Units, RP Series



A bevel gear-clutch combination is incorporated in a compact unit offering superb performance in reversible or reciprocating operations in various machines.



Model	Static friction torque (kgm)	Rated voltage (DC-V)	Power consumption at 75°C (W)	Outside dimensions (mm)					Weight (kg)
				D	L	ϕd	H	C	
RP 160	0.1	12	6	125	137	7	112	62	3.0
RP 250	0.7	24	7	180	188	11	138	71	5.0
RP 400	2.8	24	8	260	255	16	200	100	15