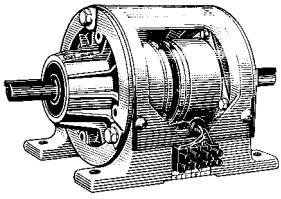
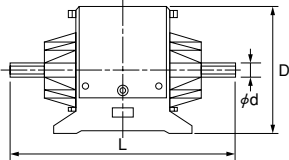
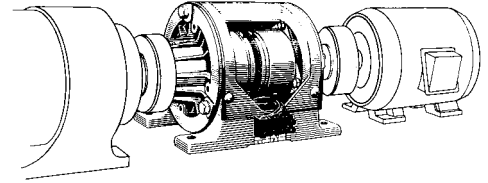


Electro-Pack Clutch/Brake Units, EP/EPS Series



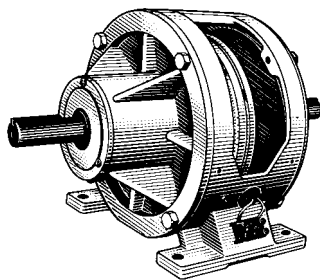
Compact double-shaft units incorporating a Warner clutch/brake. Carefully centered at the factory, they only need lead connections at the installation site.



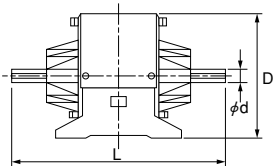
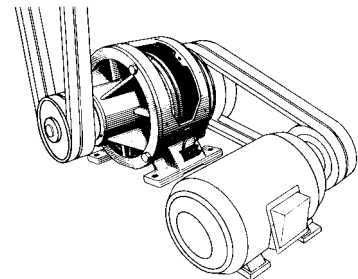
Model	Static friction torque (kgm)	Rated voltage (DC-V)	Power consumption at 75°C (W)	Outside dimensions (mm)			Weight (kg)
				D	L	φ d	
EP 160	0.1	12	6	83	150	9.5	1.5
	0.1		6				
EP 250	0.7	24	7	117	225	13	3.0
	0.7		9.7				
EP 400	2.8	24	8	175	298	19	8.8
	2.8		8				
EP 500	7	24	23	206	394	22	16
	5.5		21				
EP 501	7	24	23	202.5	375	22	14
	5.5		21				
EPS 650	13	24	26	235	448	28	42
	13		21				
EP 825	18	24	25	264	524	28	60
	18		25				
EPS 1000	35	24	31	312	620	48	100
	35		31				
EPS 1225	65	24	27	372	676	50	150
	65		27				
EPS 1525	100	24	32	452	708	50	213
	100		32				
EPS 1525HT	180	24	143	461	830	75	270
	180		143				

Note: In the above table, static friction torque and power consumption data consists of clutch (top) and brake (bottom) values.

Clutch-Coupler Clutch Units, CLC Series



Designed for easy magnetic clutch installation. Only lead connections are required after the driving and driven shafts are coupled.



Model	Static friction torque (kgm)	Rated voltage (DC-V)	Power consumption at 75°C (W)	Outside dimensions (mm)			Weight (kg)
				D	L	φ d	
CLC 250	0.7	24	7	117	198	13	2.4
CLC 400	2.8	24	8	175	264	19	6.0
CLC 501	7	24	23	204.5	352	22	13
CLC 825	18	24	25	264	460	28	46
CLC 1000	35	24	31	312	553	48	82
CLC 1225	65	24	27	372	610	50	118
CLC 1525	100	24	32	452	638	50	180
CLC 1525HT	180	24	143	461	682	75	203