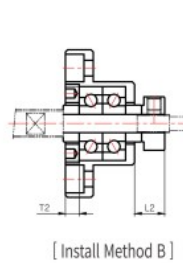
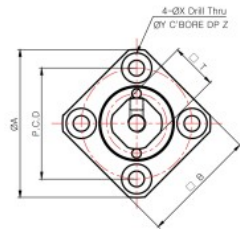
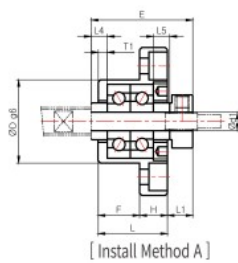


SUPPORT UNIT : FK SERIES

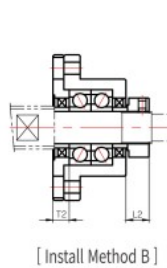
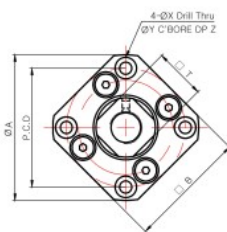
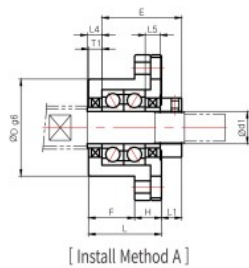


SUPPORT UNIT FOR BALL SCREW (GENERAL LOAD)

FK-4 ~ FK-8



FK-10 ~ FK-30



※ Additional note for [FK-30]

In case of choosing "Install Method B", size of spacer(collar) needs to be accordingly changed. Please contact Sung-il Customer Service team for more details.

Dimensions

Model	Sizes (mm)																			Mass (g)
	Body																Spacer(collar)			
	d1	L	H	F	E	D	A	P.C.D	□B	Install Method A		Install Method B		X	Y	Z	□T	L4	L5	
									L1	T1	L2	T2								
FK-4 P5/P0-C7	4	15	6	9	22	18	32	24	25	5.5	3/2	6.5	4/3	3.4	6	4	10	4.5/3.5	4.5/3.5	40
FK-5 P5/P0-C7	5	16.5	6	10.5	24	20	34	26	26	5.5/6.5	3.5	7/6	5/3	3.4	6/6.5	4	11	5.5/4.5	5.5/4.5	50
FK-6	6	20	7	13	29	22	36	28	28	5.5	3.5	8.5	4.5	3.4	6.5	4	12	7	5	65
FK-8	8	23	9	14	33.5	28	43	35	35	7	4	10	5	3.4	6.5	4	14	7.5	5.5	125
FK-10	10	27	10	17	29.5	34	52	42	42	7.5	5	8.5	6	4.5	8	4	16	5.5	5.5	200
FK-12	12	27	10	17	29.5	36	54	44	44	7.5	5	8.5	6	4.5	8	4	19	5.5	5.5	225
FK-15	15	32	15	17	36	40	63	50	52	10	6	12	8	5.5	9.5	6	22	10	10	340
FK-17	17	45	22	23	46	50	77	62	61	10	9	13	12	6.6	11	10	24	9	9	770
FK-20	20	52	22	30	50	57	85	70	68	8	10	12	14	6.6	11	10	30	11	11	1,065
FK-25	25	57	27	30	60	63	98	80	79	13	10	20	17	9	15	13	35	15	15	1,465
FK-30	30	62	30	32	61	75	117	95	93	11	12	21	18	11	17.5	15	40	9	9	2,300

※ Only FK-4 and FK-5 have different dimensions according to the bearing grade (P5/P0-C7).