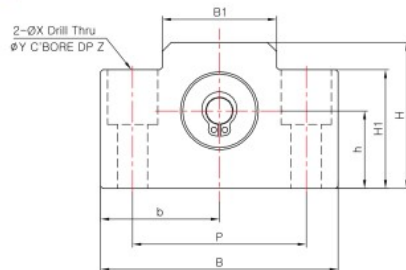


SUPPORT UNIT : EF SERIES

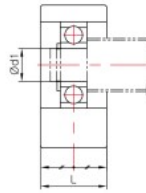
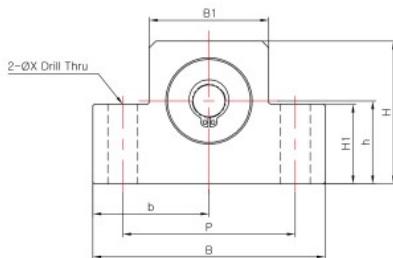


SUPPORT UNIT FOR BALL SCREW (GENERAL LOAD)

EF-6 ~ EF-8



EF-10 ~ EF-25



Dimensions

Model	Sizes (mm)												Mass (g)	Snap-ring	Bearing
	Body														
	d1	L	B	H	b±0.02	h±0.02	B1	H1	P	X	Y	Z			
EF-6	6	12	42	25	21	13	18	20	30	5.5	9.5	11	60	C6	606ZZ
EF-8	6	14	52	32	26	17	25	26	38	6.6	11	12	120	C6	606ZZ
EF-10	8	20	70	43	35	25	36	24	52	9	-	-	300	C8	608ZZ
EF-12	10	20	70	43	35	25	36	24	52	9	-	-	280	C10	6000ZZ
EF-15	15	20	80	50	40	30	41	25	60	9	-	-	320	C15	6002ZZ
EF-20	20	26	95	58	47.5	30	56	25	75	11	-	-	570	C20	6204ZZ
EF-25	25	30	105	68	52.5	35	66	25	85	11	-	-	880	C25	6205ZZ