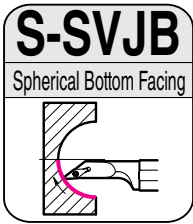
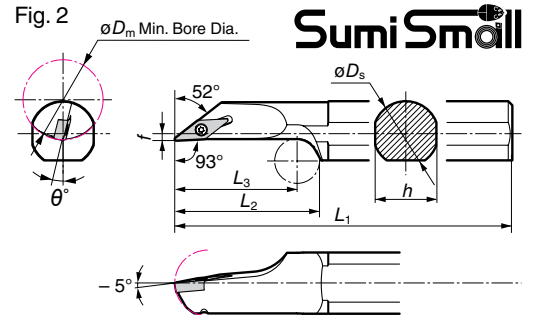
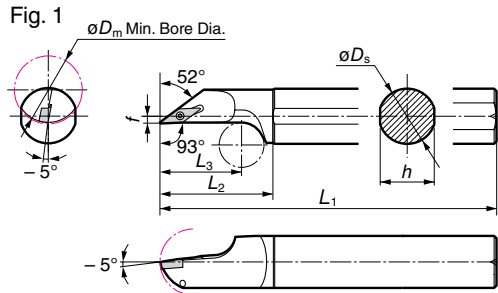


# SEC-Boring Bars S-SVJB/B-SVJB/S-SVJC Type

## Internal Copying



Steel



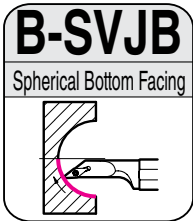
Sumi Small

### Holder

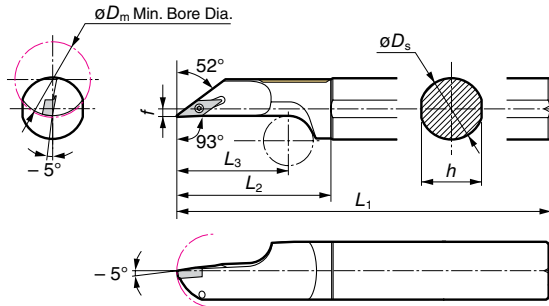
Right handed toolholders are applicable with left handed or neutral inserts.  
Left handed toolholders are applicable with right handed or neutral inserts. Above figures show right hand tools.

Shank	Cat. No.	Stock		Min. Bore Dia.	Dimensions (mm)							Fig.	Applicable Insert Cat. No.	Pin	Bolt	Shim	Screw	Recommended Tightening Torque (N·m)	Wrench	Screw Spanner
		R	L		$\phi D_m$	$\phi D_s$	$h$	$L_1$	$f$	$L_2$	$L_3$									
Steel	S20R-SVJB R/L1103-25	●	●	25	20	19	200	2.0	42	29	—	1	VB□□1103□□	—	—	—	BFTX02508NV*	1.5	TRX08	—
	S25S-SVJB R/L1103-30	●	●	30	25	24	250	3.5	50	36	—	1	VB□□1103□□	—	—	—	BFTX02508NV*	1.5	TRX08	—
	S32T-SVJB R/L1604-40	●	●	40	32	30	300	3.5	75	60	-8	2	VB□□1604□□	VP32B	BH03504	SVP32	BFTX03508	2.0	TRX10	LH020
	S40T-SVJB R/L1604-50	●	●	50	40	37	300	4.5	95	75	-7	2	VB□□1604□□	VP40B	BH03504	SVP32	BFTX03508	2.0	TRX10	LH020

\* Changed from those in the 2013-2014 General Catalog.



Anti-vibration



SumiTurn X-Bar

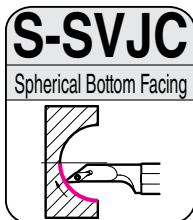
Sumi Small

### Holder

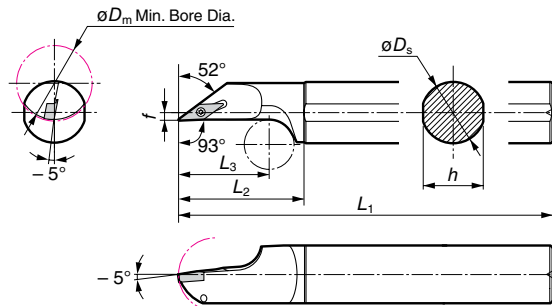
Right handed toolholders are applicable with left handed or neutral inserts.  
Left handed toolholders are applicable with right handed or neutral inserts. Above figures show right hand tools.

Shank	Cat. No.	Stock		Min. Bore Dia.	Dimensions (mm)							Applicable Insert Cat. No.	Screw	Recommended Tightening Torque (N·m)	Wrench
		R	L		$\phi D_m$	$\phi D_s$	$h$	$L_1$	$f$	$L_2$	$L_3$				
Anti-vibration	B20R-SVJB R/L1103-25	●	●	25	20	19	200	2.0	55	37.5	VB□□1103□□	BFTX02508NV*	1.5	TRX08	
	B25S-SVJB R/L1103-30	●	●	30	25	24	250	3.5	62	45	VB□□1103□□	BFTX02508NV*	1.5	TRX08	

\* Changed from those in the 2013-2014 General Catalog.



Steel



Sumi Small

### Holder

Right handed toolholders are applicable with left handed or neutral inserts.  
Left handed toolholders are applicable with right handed or neutral inserts. Above figures show right hand tools.

Shank	Cat. No.	Stock		Min. Bore Dia.	Dimensions (mm)							Applicable Insert	Screw	Recommended Tightening Torque (N·m)	Wrench
		R	L		$\phi D_m$	$\phi D_s$	$h$	$L_1$	$f$	$L_2$	$L_3$				
Steel	S12M-SVJC R/L0802-16	●	●	16	12	11	150	2.0	30	21	VC□□0802□□	BFTX0204N	0.5	TRX06	
	S16Q-SVJC R/L0802-20	●	●	20	16	15	180	2.0	40	29	VC□□0802□□	BFTX0204N	0.5	TRX06	

Boring Bars