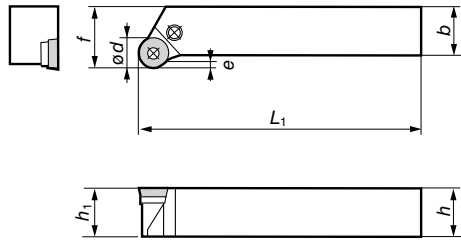
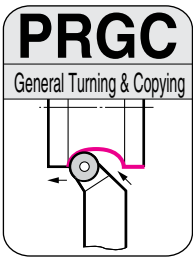


# PRGC / PRDC Type

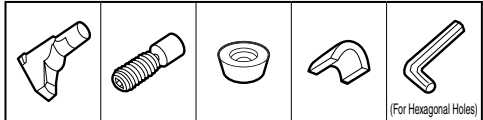


**SEC- 70 Type Tool Holders**

General Turning and Copying

Lever Lock

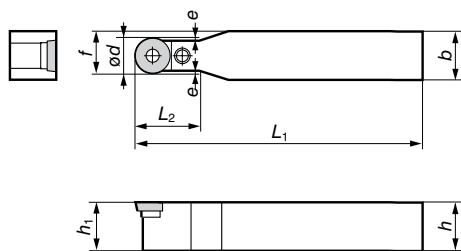
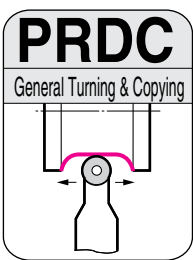
**Spare Parts**



**External Holders**

Above figures show right hand tools.

Cat. No.	Stock		Dimensions (mm)							Applicable Inserts		Lever Pin	Bolt	Shim	Shim Pin	Spanner
	R	L	h	b	L <sub>1</sub>	f	h <sub>1</sub>	e	ød	Cat. No.	Ref. Page					
PRGC R/L2020K10	●	●	20	20	125	25	20	1.5	10	RCM□1003M0	B91	LCL10	LCS10	LSR10	LSP10	LH020
PRGC R/L2525M10	●	●	25	25	150	32	25	1.5	10							
PRGC R/L2020K12	●	●	20	20	125	25	20	2.5	12							
PRGC R/L2525M12	●	●	25	25	150	32	25	2.5	12	RCM□1204M0	B91	LCL12	LCS12	LSR12	LSP10	LH025
PRGC R/L3225P12	●	●	32	25	170	32	32	2.5	12							
PRGC R/L2525M16			25	25	150	32	25	3.0	16	RCM□1606M0	B91	LCL16	LCS16	LSR16	LSP16	LH025
PRGC R/L3225P16			32	25	170	32	32	3.0	16							
PRGC R/L3232P20			32	32	170	40	32	4.0	20	RCM□2006M0	B91	LCL20	LCS20	LSR20	LSP20	LH030
PRGC R/L4040S25			40	40	250	50	40	4.5	25							
PRGC R/L5050T32			50	50	300	63	50	5.5	32	RCM□2507M0	B91	LCL25	LCS25	LSR25	LSP25	LH040
										RCM□3209M0	B91	LCL32	LCS32	LSR32	LSP32	LH050

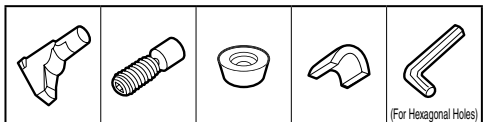


**SEC- 70 Type Tool Holders**

General Turning and Copying

Lever Lock

**Spare Parts**



**Positive Inserts**

Cat. No.	Stock	Dimensions (mm)							Applicable Inserts		Lever Pin	Bolt	Shim	Shim Pin	Spanner	
		h	b	L <sub>1</sub>	f	h <sub>1</sub>	L <sub>2</sub>	e	ød	Cat. No.						Ref. Page
PRDC N2020M10	●	20	20	150	15.0	20	22	1.0	10	RCM□1003M0	B91	LCL10	LCS10	LSR10	LSP10	LH020
PRDC N2525M10	●	25	25	150	17.5	25	22	1.0	10							
PRDC N2525M12	●	25	25	150	18.5	25	24	1.2	12							
PRDC N3225Q12	●	32	25	180	18.5	32	24	1.2	12	RCM□1204M0	B91	LCL12	LCS12	LSR12	LSP10	LH025
PRDC N3225Q16	●	32	25	180	20.5	32	28	1.5	16							
PRDC N3232Q20	●	32	32	180	26.0	32	32	1.7	20	RCM□1606M0	B91	LCL16	LCS16	LSR16	LSP16	LH025
										RCM□2006M0	B91	LCL20	LCS20	LSR20	LSP20	LH030
PRDC N4040T25		40	40	300	32.5	40	42	2.0	25	RCM□2507M0	B91	LCL25	LCS25	LSR25	LSP25	LH040
PRDC N5050U32		50	50	350	41.0	50	52	2.5	32	RCM□3209M0	B91	LCL32	LCS32	LSR32	LSP32	LH050