

③ サニタリー継手

配管サポート及び工具

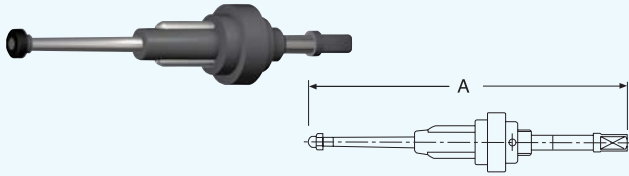
Piping Support and Tools

チューブエキスパンダ/エキスパンダ治具/スパナ
 Tube Expander/Expander Block/Spanners (S), (L)

チューブエキスパンダ

Tube Expander

Type TBEX



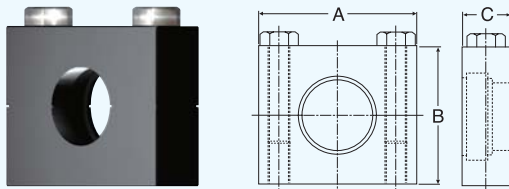
Nom.size	A	Mass kg
1.0 ^S	238	0.54
1.25 ^S	238	0.70
1.5 ^S	241	0.95
2.0 ^S	293	2.20
2.5 ^S	312	3.10
3.0 ^S	375	5.20

エキスパンダ治具

Expander Block

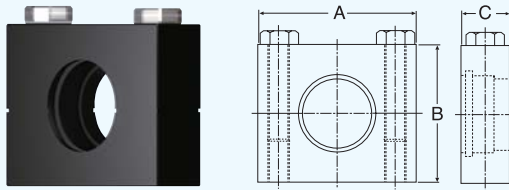
Type BLCK-M / BLCK-L / BLCK-C

■ネジスリーブ用 (for Male) Type BLCK-M



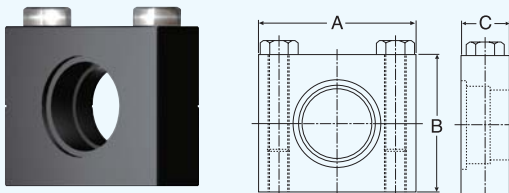
Nom.size	A	B	C	Mass kg
1.0 ^S	90	70	32	1.4
1.25 ^S	105	80	32	1.9
1.5 ^S	105	80	32	1.6
2.0 ^S	115	100	35	2.4
2.5 ^S	140	110	45	4.1
3.0 ^S	150	120	50	4.7

■ライナ用 (for Liner) Type BLCK-L



Nom.size	A	B	C	Mass kg
1.0 ^S	90	70	32	1.4
1.25 ^S	105	80	32	1.9
1.5 ^S	105	80	32	1.6
2.0 ^S	115	100	35	2.4
2.5 ^S	140	110	45	4.1
3.0 ^S	150	120	50	4.7

■ヘルール用 (for Ferrule) Type BLCK-C

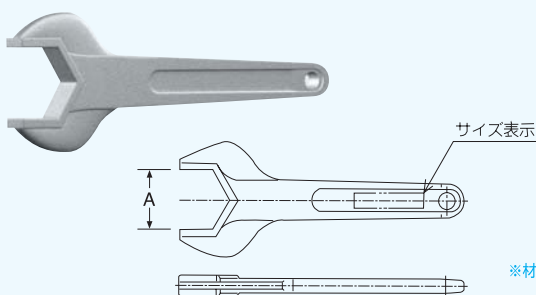


Nom.size	A	B	C	Mass kg
1.0 ^S	90	70	32	1.4
1.25 ^S	105	80	32	1.9
1.5 ^S	105	80	32	1.6
2.0 ^S	115	100	35	2.4
2.5 ^S	140	110	45	4.1
3.0 ^S	150	120	50	4.7

スパナ

Spanners (S), (L)

Type SP-H-S, SP-H-L



Nom.size	小 Small		大 Large		Mass kg	
	表示	A	表示	A	小	大
1.0 ^S	—	—	1.0SL	47.2	—	0.22
1.25 ^S	—	—	1.25SL	52.3	—	0.24
1.5 ^S	1.5SS	56.8	1.5SL	62.5	0.30	0.28
2.0 ^S	2.0SS	71.8	2.0SL	77.8	0.46	0.44
2.5 ^S	2.5SS	86.3	2.5SL	93.1	0.88	0.74
3.0 ^S	3.0SS	101.3	3.0SL	108.9	0.68	0.64
3.5 ^S	—	—	3.5SL	120.1	—	0.94
4.0 ^S	4.0SS	132.3	4.0SL	140.7	1.26	1.12

※材質: アルミニウム
Aluminum

写真は3DCGです。Photo is 3DCG.