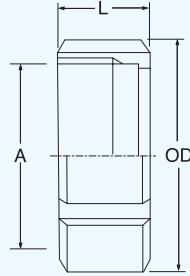
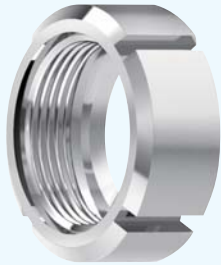


溝付丸ナット／丸ナット／ライナキャップ／ネジキャップ  
Round Nut "A" / Round Nut "B" / Liner cap / Male cap

溝付丸ナット

Round Nut "A"

Type NRA



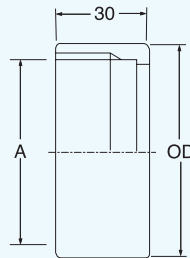
※溝数 4カ所

Nom.size	OD	A	L	Mass kg
1.0 <sup>S</sup>	48	37.13-8ACME	30	0.16
1.5 <sup>S</sup>	64	50.65-8ACME	30	0.22
2.0 <sup>S</sup>	77	64.16-8ACME	30	0.30
2.5 <sup>S</sup>	91	77.67-8ACME	30	0.41
3.0 <sup>S</sup>	106	91.19-8ACME	30	0.56
3.5 <sup>S</sup>	122	104.70-8ACME	30	0.68
4.0 <sup>S</sup>	138	119.25-6ACME	38	1.20

丸ナット

Round Nut "B"

Type NRB



Nom.size	OD	A	Mass kg
1.0 <sup>S</sup>	44.4	37.13-8ACME	0.09
1.5 <sup>S</sup>	57.1	50.65-8ACME	0.16
2.0 <sup>S</sup>	69.8	64.16-8ACME	0.17
2.5 <sup>S</sup>	85.7	77.67-8ACME	0.28
3.0 <sup>S</sup>	101.6	91.19-8ACME	0.44

ライナキャップ

Liner cap

Type LNRB

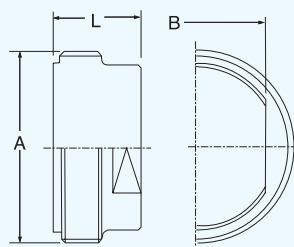
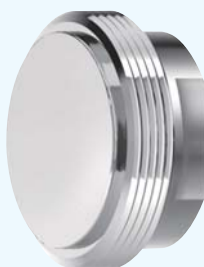


Nom.size	A	L	Mass kg
1.0 <sup>S</sup>	33.8	11.5	0.07
1.25 <sup>S</sup>	38.9	10	0.11
1.5 <sup>S</sup>	47	11.5	0.13
2.0 <sup>S</sup>	60.5	11.5	0.24
2.5 <sup>S</sup>	74	11.5	0.37
3.0 <sup>S</sup>	87.5	11.5	0.51
3.5 <sup>S</sup>	101	11.5	0.69
4.0 <sup>S</sup>	114.1	13	1.10

ネジキャップ

Male cap

Type MALB



Nom.size	A	B	L	Mass kg
1.0 <sup>S</sup>	37.13-8ACME	22	30	0.18
1.25 <sup>S</sup>	43.16-8ACME	27	30	0.28
1.5 <sup>S</sup>	50.65-8ACME	32	30	0.36
2.0 <sup>S</sup>	64.16-8ACME	46	30	0.63
2.5 <sup>S</sup>	77.67-8ACME	55	30	0.91
3.0 <sup>S</sup>	91.19-8ACME	70	30	1.34
3.5 <sup>S</sup>	104.70-8ACME	85	30	1.61
4.0 <sup>S</sup>	119.25-6ACME	95	35	2.30