

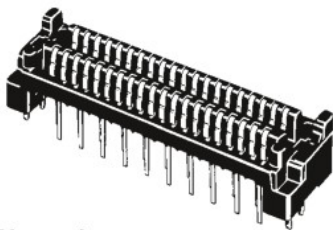
XH4A Straight DIP Terminals

Stacking Space Adjustable in Standard Size and 1-, 2-, or 3-mm Increments

Dimensions

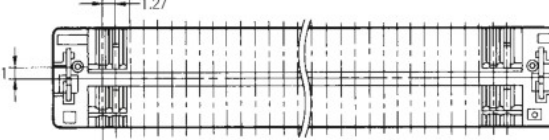
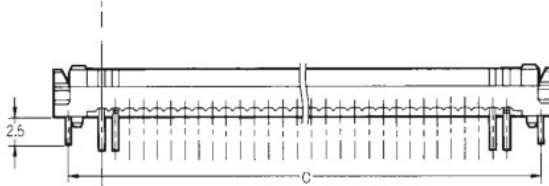
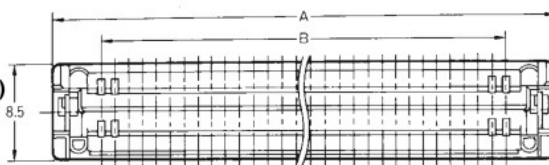
(unit: mm)

- XH4A-□□31-A (Standard)
 - XH4A-□□31-1A (1-mm Increment)
 - XH4A-□□31-2A (2-mm Increments)
 - XH4A-□□31-3A (3-mm Increments)
- (Straight DIP Terminals with Fastening Pins)

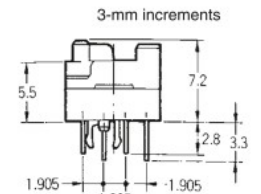


Dimensions

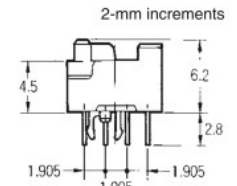
Dimensions (mm)	A	B	C
No. of contacts			
40	32.73	24.13	30.23
50	39.08	30.48	36.58
60	45.43	36.83	42.93
80	58.13	49.53	55.63
100	70.83	62.23	68.33



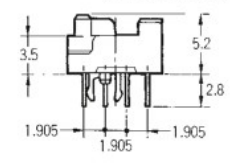
Reference



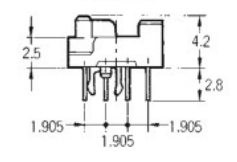
3-mm increments



2-mm increments

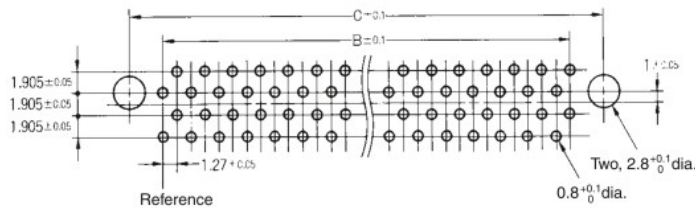


1-mm increments

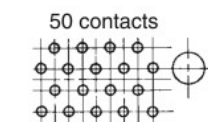


Standard

Mounting holes
(bottom view)
40, 60, 80, 100 contacts



Reference



50 contacts

Ordering Information

Model	Straight DIP Terminals with fastening pins (See note.) (Standard)	Straight DIP Terminals with fastening pins (See note.) (1-mm increment)	Straight DIP Terminals with fastening pins (See note.) (2-mm increments)	Straight DIP Terminals with fastening pins (See note.) (3-mm increments)
40	XH4A-4031-A	XH4A-4031-1A	XH4A-4031-2A	XH4A-4031-3A
50	XH4A-5031-A	XH4A-5031-1A	XH4A-5031-2A	XH4A-5031-3A
60	XH4A-6031-A	XH4A-6031-1A	XH4A-6031-2A	XH4A-6031-3A
80	XH4A-8031-A	XH4A-8031-1A	XH4A-8031-2A	XH4A-8031-3A
100	XH4A-0131-A	XH4A-0131-1A	XH4A-0131-2A	XH4A-0131-3A

Note: Applicable board thickness is 1.6 mm.