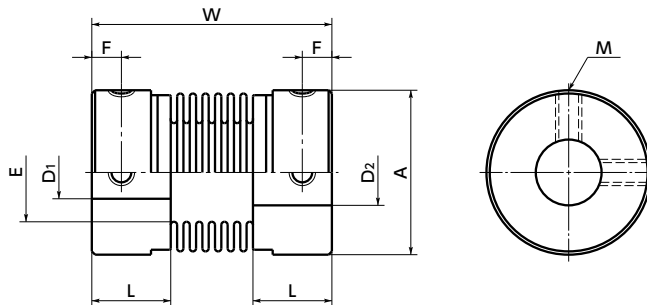


MFB/MFBS/MFB-C/MFBS-C Flexible Coupling - Bellows - type

Selection Tool
 CAD Download
 Zero Backlash
 SUS Stainless steel

MFB Aluminum alloy hub
MFBS Made of all stainless steel



Dimensions

Unit : mm

Part Number	A	L	W	E	F	G	M	Screw Tightening Torque (N·m)	Standard Bore Diameter								
									D1	D2	3	4	5	6	8	10	12
MFB-12	12	7.5	23.5	7	2.5		M2.5	0.5	●	●	●	●					
MFB-16	16	9	26.5	9.5	3		M3	0.7		●	●	●	●				
MFB-20	20	10	33	12.5	3.5		M3	0.7			●	●	●	●			
MFB-25	25	12	36.5	15	4.5		M4	1.7				●	●	●	●		
MFB-32	32	13.5	42	21	5.5		M4	1.7					●	●	●	●	
MFBS-12	12	7.5	23.5	7	2.5		M2.5	0.5	●	●	●	●					
MFBS-16	16	9	26.5	9.5	3		M3	0.7		●	●	●	●				
MFBS-20	20	10	32	12.5	3.5		M3	0.7			●	●	●	●			
MFBS-25	25	12	36.5	15	4.5		M4	1.7				●	●	●	●		
MFBS-32	32	13.5	42	21	5.5		M4	1.7				●	●	●	●	●	
MFB-12C	12	7.5	23.5	7	2.25	4	M2	0.5		●	●						
MFB-16C	16	9	26.5	9.5	3	5	M2.5	1			●	●					
MFB-20C	20	10	33	12.5	3.5	6.5	M2.5	1				●	●				
MFB-25C	25	12	36.5	15	4.5	9	M3	1.5					●	●			
MFB-32C	32	13.5	42	21	5	11	M4	2.5						●	●	●	●
MFBS-12C	12	7.5	23.5	7	2.25	4	M2	0.5		●	●						
MFBS-16C	16	9	26.5	9.5	3	5	M2.5	1			●	●					
MFBS-20C	20	10	32	12.5	3.5	6.5	M2.5	1				●	●				
MFBS-25C	25	12	36.5	15	4.5	9	M3	1.5					●	●			
MFBS-32C	32	13.5	42	21	5	11	M4	2.5						●	●	●	●

- All products are provided with hex socket set screws (**MFB**, **MFBS**) and hex socket head cap screws (**MFB-C**, **MFBS-C**).
- In a case where the bore diameter is $\phi 4$ or less, the set screw is used in only one place.
- The dimensional allowance for bore diameter of a set screw type is H8.
- Recommended dimensional allowances of applicable shaft diameter are h6 and h7.
- In case of mounting a clamping type **MFB-C** **MFBS-C** on D-cut shaft, be careful about the position of the D-cut surface of the shaft.
→ P.257

Additional Keyway at Shaft Hole → P.788

Cleanroom Wash & Packaging → P.792

Change to Stainless Steel Screw → P.790

Available / Add'l charge

Available / Add'l charge

Available / Add'l charge