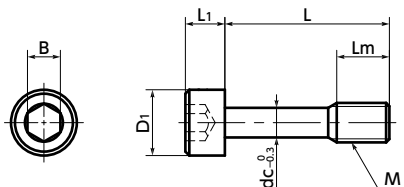




# SSC Socket Head Cap Captive Screws

WEB Selection Tool | WEB CAD Download | SUS Stainless steel



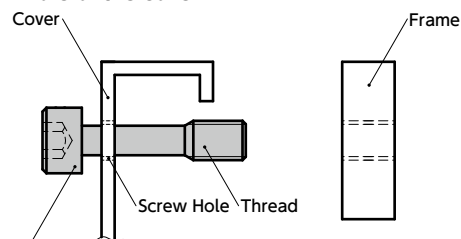
● Material/Finish



	<b>SSC</b>
Main Body	SUSXM7 (S.S. grade : A2)
Strength Class	A2-70

**⚠** Precautions for Use

- The inner diameter of the screw hole of the cover must be equal or larger than dimension dc.
- The thickness of the cover must be 0.8 mm or more.
- Installation example  
Process a screw hole in the cover, then pass **SSC** thread through it. Even when the screw is removed from the frame, **SSC** does not fall out from the cover because **SSC** thread catches on the screw hole of the cover.



**SSC** Socket Head Cap Captive Screw

- The shape of the screws prevent them from falling out and being lost. For fixing protective and inspection covers that are frequently installed and removed.
- Socket head cap screw type.
- These items comply with CE marking requirements. → P.681
- Also, captive screws with special specifications for dimensions, shapes, materials, and surface treatments are available.



● Application

Securement of protective and inspection covers and compliance with CE marked products  
Machine tools, food industry machines, and electrical and electronic equipment

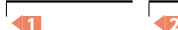
Unit : mm

Part Number	M	L								Lm	D1	L1	B	dc	Mass (g)
<b>SSC-M3</b>	M3	8	10	12	16					4	5.5	3	2.5	2.2	0.8 - 1.2
<b>SSC-M4</b>	M4		10	12	16	20				5	7	4	3	3	1.8 - 2.7
<b>SSC-M5</b>	M5			12	16	20	25			6	8.5	5	4	3.9	3 - 4.8
<b>SSC-M6</b>	M6			12	16	20	25	30		8	10	6	5	4.5	5.1 - 8.3
<b>SSC-M8</b>	M8				16	20	25	30	35	40	10	13	8	6.3	12 - 21

Part Number	Qty per pack
<b>SSC-M3</b>	1
<b>SSC-M4</b>	1
<b>SSC-M5</b>	1
<b>SSC-M6</b>	1
<b>SSC-M8</b>	1

● Part number specification

**SSC-M6-12**



<b>1</b> Individual Sales → P.794	<b>1</b> Cleanroom Wash & Packaging → P.792	<b>1</b> Screw Length Adjustment → P.796	<b>1</b> Vibration Resistant → P.795	<b>1</b> Modification process for captive use → P.791
1 unit in 1 bag	Available / Add'l charge	Not Available	Not Available	with Captive Processing