

# TAS-XY XY-axis Screw Stages

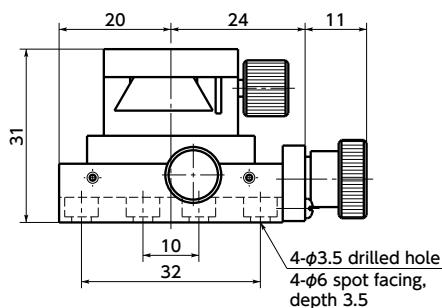
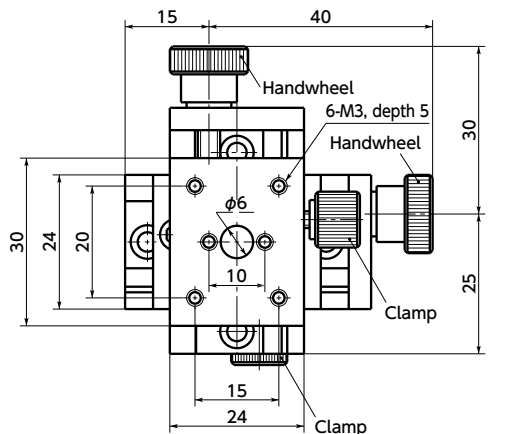


WEB Selection Tool    WEB CAD Download

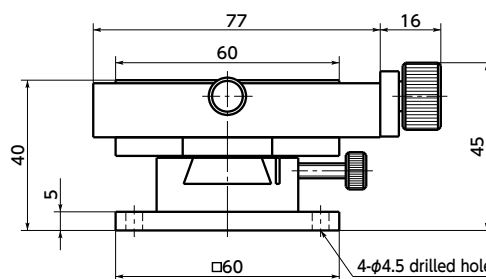
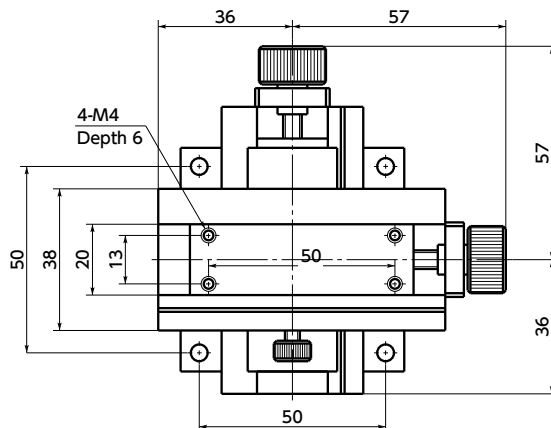
TAS-60XY



TAS-30XY



TAS-60XY



## ⚠ Precautions for Use

**TAS-60XY** has the feeding handwheel above the stage surface. There may be interference depending on the shape of work fixed on the stage.

## ● Part number specification

### TAS-30XY



- Two axes (X and Y axes) can be moved.
- Screws are used for micromotion feed.
- Dovetail groove method is adopted for the travel guide. A rattle correction function is provided.

## ● Material/Finish

RoHS Compliant

	TAS-30XY	TAS-60XY
Stage	Brass Black chrome plating	Brass Black chrome plating
Main body	Brass Coating (Silver)	Brass Coating (Black)
Lower surface spacer	Aluminum Alloy Alumite Treatment (Black)	Aluminum Alloy Alumite Treatment (Black)

Part Number	Stage Face	Travel Guide	Travel distance	Screw Pitch	Mass (g)
TAS-30XY	24×30	Dovetail Groove Method	±4	0.5	400
TAS-60XY	18×60	Dovetail Groove Method	±7.5	0.5	900

Unit : mm

Part Number	Straightness	Parallelism	Position Resolution	Withstand load (N)
TAS-30XY	0.02	0.1	0.01	68.7
TAS-60XY	0.02	0.1	0.01	147

Unit : mm

● Pan head machine screws for mounting (M3 x 5 **TAS-30XY**) and hex socket head cap screw (M4 x 10 **TAS-60XY**) are provided.