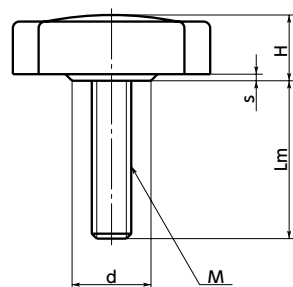
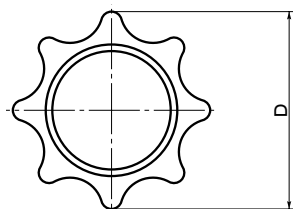


KP Eight Lobe Knob



WEB Selection Tool WEB CAD Download



● Material/Finish

RoHS Compliant

	KP
knob	Nylon 6 (Matte Black)
Thread Part	SS400 Trivalent Chromate Treatment

Unit : mm

Part Number	D	M (Coarse)	Lm	H	s	d	Mass (g)
KP-30A	30	M6	30	10	3	15	12
KP-30	30	M8	30	10	3	15	17
KP-50	50	M10	40	16	2	20	49
KP-65	65	M10	50	18	2	23	66
KP-65B	65	M12	50	18	2	23	83

● Part number specification

KP-50



Cleanroom Wash & Packaging → P.792	Screw Combination → P.798	Screw Length Adjustment → P.796	Vibration Resistant → P.795	Laser Marking → P.806
Not Available	Not Available	Available / Add'l charge	Available / Add'l charge	Available / Add'l charge