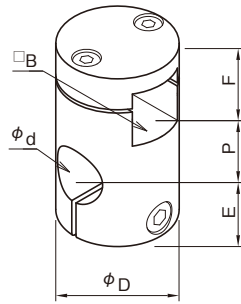


To separate □B part and attach to a frame afterward (Rect-round) **SH-290**



Separate

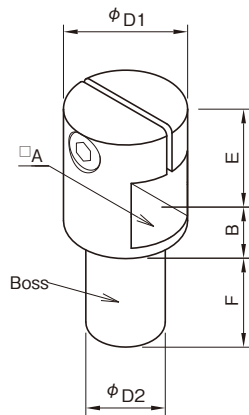


	□B	ϕd	ϕD	E	P	F	Cap screw	
SH1009-290	□10	ϕ 9	ϕ25	15	13	11	2-M4	M5
SH10 -290		ϕ10						
SH1210-290	□12	ϕ10	ϕ28	16	15	12	2-M4	M5
SH12 -290		ϕ12						
SH1310-290	□13	ϕ10	ϕ28	16	15	12	2-M4	M5
SH1312-290		ϕ12						
SH13 -290		ϕ13						
SH1513-290	□15	ϕ13	ϕ31	19	20	14	2-M4	M5
SH15 -290		ϕ15						
SH1615-290	□16	ϕ15	ϕ31	19	20	14	2-M4	M5
SH16 -290		ϕ16						
SH1915-290	□19	ϕ15	ϕ40	23	24	17	2-M5	M6
SH1916-290		ϕ16						
SH19 -290		ϕ19.1						
SH2019-290	□20	ϕ19.1	ϕ40	23	24	17	2-M5	M6
SH20 -290		ϕ20						
SH2519-290	□25	ϕ19.1	ϕ45	22	30	20	2-M5	M6
SH2520-290		ϕ20						
SH25 -290		ϕ25.1						
				25				

To insert boss and make it arbitrarily-angle **SH-204**



Rect-boss type

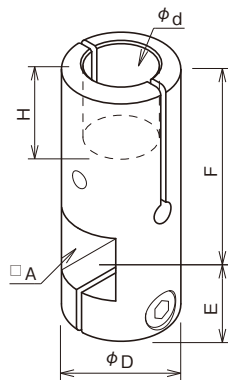


	□A	ϕD2	ϕD1	E	B	F	Cap screw
SH06 -204	□ 6	ϕ 6	ϕ13	10.5	6	13.5	M3
SH08 -204	□ 8	ϕ 8	ϕ15	13.5	6.5	15	M4
SH09 -204	□ 9	ϕ 9	ϕ19	14.5	7.5	19	M4
SH1009-204	□10	ϕ 9	ϕ19	14.5	8	19	M4
SH10 -204		ϕ10					
SH1210-204	□12	ϕ10	ϕ22	15.5	9	22	M4
SH12 -204		ϕ12					
SH1310-204	□13	ϕ10	ϕ22	15.5	9	22	M4
SH1312-204		ϕ12					
SH13 -204		ϕ13					
SH1513-204	□15	ϕ13	ϕ25	19	11	25	M5
SH15 -204		ϕ15					
SH1615-204	□16	ϕ15	ϕ25	19	11	25	M5
SH16 -204		ϕ16					
SH1915-204	□19	ϕ15	ϕ29	21.5	13.5	30	M5
SH1916-204		ϕ16					
SH19 -204		ϕ19					
SH2019-204	□20	ϕ19	ϕ29	21.5	13.5	30	M5
SH20 -204		ϕ20					
SH2519-204	□25	ϕ19	ϕ41	25	17	30	M6
SH2520-204		ϕ20					
SH25 -204		ϕ25					

To fix by Rect-shaft and attach functional device by utilizing rotation of round shaft **SH-209**



Rect-vertical round



	□A	ϕd	ϕD	E	F	H	Cap screw
SH06-209	□ 6	ϕ 6	ϕ13	10.5	22	6	M3
SH08-209	□ 8	ϕ 8	ϕ15	13.5	27.5	8	M4
SH09-209	□ 9	ϕ 9	ϕ19	14.5	29.5	9	M4
SH10-209	□10	ϕ10	ϕ19	14.5	32.5	11	M4
SH12-209	□12	ϕ12	ϕ22	15.5	36.5	13	M4
SH13-209	□13	ϕ13	ϕ22	15.5	36.5	13	M4
SH15-209	□15	ϕ15	ϕ25	19	43	16	M5
SH16-209	□16	ϕ16	ϕ25	19	44	17	M5
SH19-209	□19	ϕ19.1	ϕ29	21.5	46.5	17	M5
SH20-209	□20	ϕ20	ϕ29	21.5	46.5	17	M5
SH25-209	□25	ϕ25.1	ϕ41	25	57	22	M6